



# RS4Y2 Polyclonal Antibody

<b>Catalog No</b>	BYab-05243
<b>Isotype</b>	IgG
<b>Reactivity</b>	Human;Rat;Mouse;
<b>Applications</b>	WB;ELISA
<b>Gene Name</b>	RPS4Y2 RPS4Y2P
<b>Protein Name</b>	40S ribosomal protein S4, Y isoform 2
<b>Immunogen</b>	Synthesized peptide derived from human protein . at AA range: 50-130
<b>Specificity</b>	RS4Y2 Polyclonal Antibody detects endogenous levels of protein.
<b>Formulation</b>	Liquid in PBS containing 50% glycerol, and 0.02% sodium azide.
<b>Source</b>	Polyclonal, Rabbit,IgG
<b>Purification</b>	The antibody was affinity-purified from rabbit antiserum by affinity-chromatography using epitope-specific immunogen.
<b>Dilution</b>	WB 1:500-2000 ELISA 1:5000-20000
<b>Concentration</b>	1 mg/ml
<b>Purity</b>	≥90%
<b>Storage Stability</b>	-20°C/1 year
<b>Synonyms</b>	
<b>Observed Band</b>	28kD
<b>Cell Pathway</b>	cytosolic small ribosomal subunit,
<b>Tissue Specificity</b>	
<b>Function</b>	miscellaneous:This isoform is encoded on the Y chromosome.,similarity:Belongs to the ribosomal protein S4e family.,similarity:Contains 1 S4 RNA-binding domain.,
<b>Background</b>	The protein encoded by this gene is a ribosomal protein that is highly similar to RPS4Y1. This gene is located in the male-specific region of the Y chromosome. [provided by RefSeq, Aug 2012],
<b>matters needing attention</b>	Avoid repeated freezing and thawing!

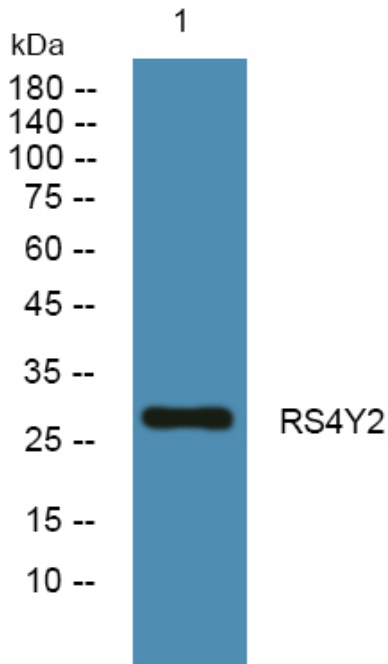
Nanjing BYabscience technology Co.,Ltd



### Usage suggestions

This product can be used in immunological reaction related experiments. For more information, please consult technical personnel.

## Products Images



Western blot analysis of lysates from K562 cells, primary antibody was diluted at 1:1000, 4° over night