



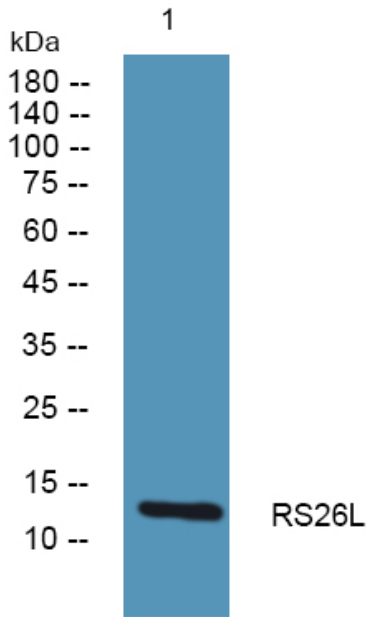
# RS26L Polyclonal Antibody

<b>Catalog No</b>	BYab-05241
<b>Isotype</b>	IgG
<b>Reactivity</b>	Human;Rat;Mouse;
<b>Applications</b>	WB;ELISA
<b>Gene Name</b>	RPS26P11 RPS26L1
<b>Protein Name</b>	Putative 40S ribosomal protein S26-like 1
<b>Immunogen</b>	Synthesized peptide derived from human protein . at AA range: 30-110
<b>Specificity</b>	RS26L Polyclonal Antibody detects endogenous levels of protein.
<b>Formulation</b>	Liquid in PBS containing 50% glycerol, and 0.02% sodium azide.
<b>Source</b>	Polyclonal, Rabbit,IgG
<b>Purification</b>	The antibody was affinity-purified from rabbit antiserum by affinity-chromatography using epitope-specific immunogen.
<b>Dilution</b>	WB 1:500-2000 ELISA 1:5000-20000
<b>Concentration</b>	1 mg/ml
<b>Purity</b>	≥90%
<b>Storage Stability</b>	-20°C/1 year
<b>Synonyms</b>	
<b>Observed Band</b>	12kD
<b>Cell Pathway</b>	cytosolic small ribosomal subunit,
<b>Tissue Specificity</b>	
<b>Function</b>	caution:Could be the product of a pseudogene.,similarity:Belongs to the ribosomal protein S26e family.,
<b>Background</b>	caution:Could be the product of a pseudogene.,similarity:Belongs to the ribosomal protein S26e family.,
<b>matters needing attention</b>	Avoid repeated freezing and thawing!
<b>Usage suggestions</b>	This product can be used in immunological reaction related experiments. For more information, please consult technical personnel.

Nanjing BYabscience technology Co.,Ltd



## Products Images



Western blot analysis of lysates from HCT116 cells,  
primary antibody was diluted at 1:1000, 4° over night