



PLCA Polyclonal Antibody

Catalog No	BYab-05214
Isotype	IgG
Reactivity	Human;Mouse
Applications	WB;ELISA
Gene Name	AGPAT1 G15
Protein Name	1-acyl-sn-glycerol-3-phosphate acyltransferase alpha (EC 2.3.1.51) (1-acylglycerol-3-phosphate O-acyltransferase 1) (1-AGP acyltransferase 1) (1-AGPAT 1) (Lysophosphatidic acid acyltransferase alpha)
Immunogen	Synthesized peptide derived from human protein . at AA range: 150-230
Specificity	PLCA Polyclonal Antibody detects endogenous levels of protein.
Formulation	Liquid in PBS containing 50% glycerol, and 0.02% sodium azide.
Source	Polyclonal, Rabbit,IgG
Purification	The antibody was affinity-purified from rabbit antiserum by affinity-chromatography using epitope-specific immunogen.
Dilution	WB 1:500-2000 ELISA 1:5000-20000
Concentration	1 mg/ml
Purity	≥90%
Storage Stability	-20°C/1 year
Synonyms	
Observed Band	31kD
Cell Pathway	Endoplasmic reticulum membrane ; Multi-pass membrane protein .
Tissue Specificity	Widely expressed. Expressed in adipose tissue and at high levels in testis and pancreas. Expressed at lower levels in tissues such as heart, brain, placenta, kidney, lung, spleen, thymus, prostate, ovary, intestine, colon, leukocyte and liver.
Function	catalytic activity:Acyl-CoA + 1-acyl-sn-glycerol 3-phosphate = CoA + 1,2-diacyl-sn-glycerol 3-phosphate.,domain:The HXXXXD motif is essential for acyltransferase activity and may constitute the binding site for the phosphate moiety of the glycerol-3-phosphate.,function:Converts lysophosphatidic acid (LPA) into phosphatidic acid by incorporating an acyl moiety at the sn-2 position of the glycerol backbone.,pathway:Phospholipid metabolism; CDP-diacylglycerol biosynthesis; CDP-diacylglycerol from sn-glycerol 3-phosphate: step 2/3.,similarity:Belongs to the 1-acyl-sn-glycerol-3-phosphate acyltransferase family.,

Nanjing BYabscience technology Co.,Ltd



Background

This gene encodes an enzyme that converts lysophosphatidic acid (LPA) into phosphatidic acid (PA). LPA and PA are two phospholipids involved in signal transduction and in lipid biosynthesis in cells. This enzyme localizes to the endoplasmic reticulum. This gene is located in the class III region of the human major histocompatibility complex. Alternative splicing results in two transcript variants encoding the same protein. [provided by RefSeq, Jul 2008],

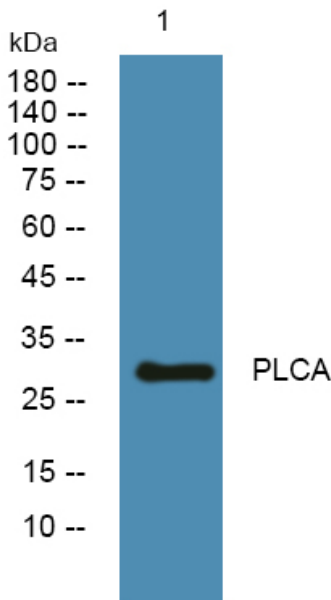
matters needing attention

Avoid repeated freezing and thawing!

Usage suggestions

This product can be used in immunological reaction related experiments. For more information, please consult technical personnel.

Products Images



Western blot analysis of lysates from PC12 cells, primary antibody was diluted at 1:1000, 4° over night