



PO5F2 Polyclonal Antibody

Catalog No	BYab-05213
Isotype	IgG
Reactivity	Human;Rat;Mouse;
Applications	WB;ELISA
Gene Name	POU5F2 SPRM1
Protein Name	POU domain, class 5, transcription factor 2 (Sperm 1 POU domain transcription factor) (SPRM-1)
Immunogen	Synthesized peptide derived from human protein . at AA range: 150-230
Specificity	PO5F2 Polyclonal Antibody detects endogenous levels of protein.
Formulation	Liquid in PBS containing 50% glycerol, and 0.02% sodium azide.
Source	Polyclonal, Rabbit,IgG
Purification	The antibody was affinity-purified from rabbit antiserum by affinity-chromatography using epitope-specific immunogen.
Dilution	WB 1:500-2000 ELISA 1:5000-20000
Concentration	1 mg/ml
Purity	≥90%
Storage Stability	-20°C/1 year
Synonyms	
Observed Band	36kD
Cell Pathway	Nucleus .
Tissue Specificity	Expressed in skeletal and cardiac muscles, brain, heart and lung. Little or no detectable expression found in pancreas, kidney, liver or placenta.
Function	function:Transcription factor that binds preferentially to the octamer motif (5'-ATGTTAAT-3'). May exert a regulatory function in meiotic events that are required for terminal differentiation of male germ cell.,similarity:Belongs to the POU transcription factor family. Class-5 subfamily.,similarity:Contains 1 homeobox DNA-binding domain.,similarity:Contains 1 POU-specific domain.,tissue specificity:Expressed in skeletal and cardiac muscles, brain, heart and lung. Little or no detectable expression found in pancreas, kidney, liver or placenta.,
Background	function:Transcription factor that binds preferentially to the octamer motif (5'-ATGTTAAT-3'). May exert a regulatory function in meiotic events that are required for terminal differentiation of male germ cell.,similarity:Belongs to the

Nanjing BYabscience technology Co.,Ltd



POU transcription factor family. Class-5 subfamily.,similarity:Contains 1 homeobox DNA-binding domain.,similarity:Contains 1 POU-specific domain.,tissue specificity:Expressed in skeletal and cardiac muscles, brain, heart and lung. Little or no detectable expression found in pancreas, kidney, liver or placenta.,

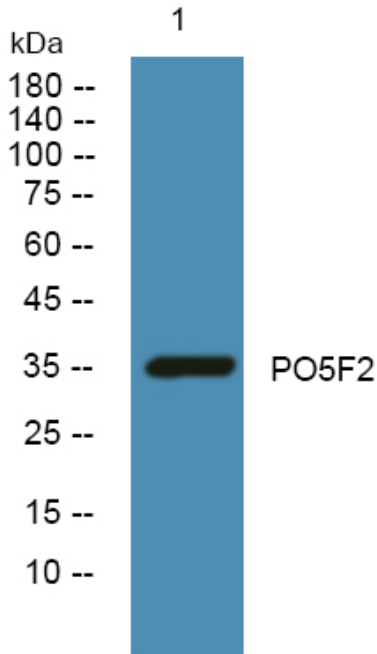
matters needing attention

Avoid repeated freezing and thawing!

Usage suggestions

This product can be used in immunological reaction related experiments. For more information, please consult technical personnel.

Products Images



Western blot analysis of lysates from K562 cells, primary antibody was diluted at 1:1000, 4° over night