



ORC6 Polyclonal Antibody

Catalog No	BYab-05211
Isotype	IgG
Reactivity	Human;Mouse
Applications	WB;ELISA
Gene Name	ORC6 ORC6L
Protein Name	Origin recognition complex subunit 6
Immunogen	Synthesized peptide derived from human protein . at AA range: 160-240
Specificity	ORC6 Polyclonal Antibody detects endogenous levels of protein.
Formulation	Liquid in PBS containing 50% glycerol, and 0.02% sodium azide.
Source	Polyclonal, Rabbit,IgG
Purification	The antibody was affinity-purified from rabbit antiserum by affinity-chromatography using epitope-specific immunogen.
Dilution	WB 1:500-2000 ELISA 1:5000-20000
Concentration	1 mg/ml
Purity	≥90%
Storage Stability	-20°C/1 year
Synonyms	
Observed Band	27kD
Cell Pathway	Nucleus.
Tissue Specificity	Cervix,Epithelium,Testis,Whole embryo,
Function	function:Component of the origin recognition complex (ORC) that binds origins of replication. It has a role in both chromosomal replication and mating type transcriptional silencing. Binds to the ARS consensus sequence (ACS) of origins of replication in an ATP-dependent manner.,PTM:Phosphorylated upon DNA damage, probably by ATM or ATR.,similarity:Belongs to the ORC6 family.,subunit:ORC is composed of six subunits. Interacts with DBF4.,
Background	The origin recognition complex (ORC) is a highly conserved six subunit protein complex essential for the initiation of the DNA replication in eukaryotic cells. Studies in yeast demonstrated that ORC binds specifically to origins of replication and serves as a platform for the assembly of additional initiation factors such as Cdc6 and Mcm proteins. The protein encoded by this gene is a subunit of the

Nanjing BYabscience technology Co.,Ltd



ORC complex. Gene silencing studies with small interfering RNA demonstrated that this protein plays an essential role in coordinating chromosome replication and segregation with cytokinesis. [provided by RefSeq, Oct 2010],

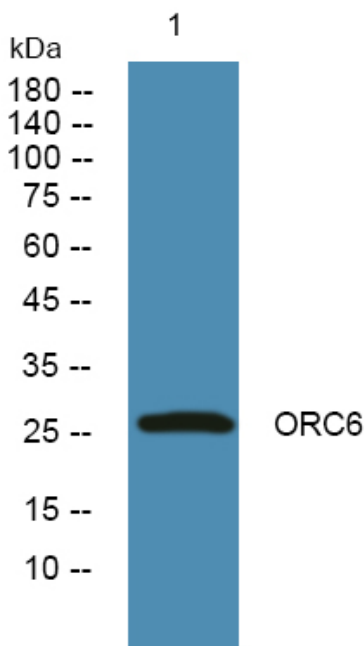
matters needing attention

Avoid repeated freezing and thawing!

Usage suggestions

This product can be used in immunological reaction related experiments. For more information, please consult technical personnel.

Products Images



Western blot analysis of lysates from Jarkat cells, primary antibody was diluted at 1:1000, 4° over night