



# ORC4 Polyclonal Antibody

|                           |  |
|---------------------------|--|
| <b>Catalog No</b>         | BYab-05210   |
| <b>Isotype</b>            | IgG  |
| <b>Reactivity</b>         | Human;Mouse;Rat  |
| <b>Applications</b>       | WB;ELISA   |
| <b>Gene Name</b>          | ORC4 ORC4L   |
| <b>Protein Name</b>       | Origin recognition complex subunit 4   |
| <b>Immunogen</b>          | Synthesized peptide derived from human protein . at AA range: 140-220  |
| <b>Specificity</b>        | ORC4 Polyclonal Antibody detects endogenous levels of protein.   |
| <b>Formulation</b>        | Liquid in PBS containing 50% glycerol, and 0.02% sodium azide.   |
| <b>Source</b>             | Polyclonal, Rabbit,IgG   |
| <b>Purification</b>       | The antibody was affinity-purified from rabbit antiserum by affinity-chromatography using epitope-specific immunogen.  |
| <b>Dilution</b>           | WB 1:500-2000 ELISA 1:5000-20000   |
| <b>Concentration</b>      | 1 mg/ml  |
| <b>Purity</b>             | ≥90%   |
| <b>Storage Stability</b>  | -20°C/1 year   |
| <b>Synonyms</b>           |  |
| <b>Observed Band</b>      | 47kD   |
| <b>Cell Pathway</b>       | Nucleus.   |
| <b>Tissue Specificity</b> | Placenta,Uterus,   |
| <b>Function</b>           | function:Component of the origin recognition complex (ORC) that binds origins of replication. It has a role in both chromosomal replication and mating type transcriptional silencing. Binds to the ARS consensus sequence (ACS) of origins of replication in an ATP-dependent manner.,similarity:Belongs to the ORC4 family.,subunit:ORC is composed of six subunits. Interacts with DBF4.,   |
| <b>Background</b>         | The origin recognition complex (ORC) is a highly conserved six subunit protein complex essential for the initiation of the DNA replication in eukaryotic cells. Studies in yeast demonstrated that ORC binds specifically to origins of replication and serves as a platform for the assembly of additional initiation factors such as Cdc6 and Mcm proteins. This gene encodes a subunit of the ORC complex. Several alternatively spliced transcript variants, some of which encode the same |

Nanjing BYabscience technology Co.,Ltd



protein, have been reported for this gene. [provided by RefSeq, Oct 2010],

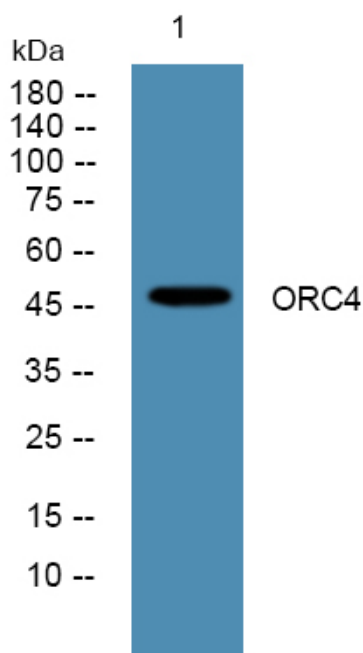
**matters needing attention**

Avoid repeated freezing and thawing!

**Usage suggestions**

This product can be used in immunological reaction related experiments. For more information, please consult technical personnel.

## Products Images



Western blot analysis of lysates from DU145 cells, primary antibody was diluted at 1:1000, 4° over night