



GEMI8 Polyclonal Antibody

Catalog No	BYab-05200
Isotype	IgG
Reactivity	Human;Mouse
Applications	WB;ELISA
Gene Name	GEMIN8 FAM51A1
Protein Name	Gem-associated protein 8 (Gemin-8) (Protein FAM51A1)
Immunogen	Synthesized peptide derived from human protein . at AA range: 180-260
Specificity	GEMI8 Polyclonal Antibody detects endogenous levels of protein.
Formulation	Liquid in PBS containing 50% glycerol, and 0.02% sodium azide.
Source	Polyclonal, Rabbit,IgG
Purification	The antibody was affinity-purified from rabbit antiserum by affinity-chromatography using epitope-specific immunogen.
Dilution	WB 1:500-2000 ELISA 1:5000-20000
Concentration	1 mg/ml
Purity	≥90%
Storage Stability	-20°C/1 year
Synonyms	
Observed Band	26kD
Cell Pathway	Nucleus, gem . Cytoplasm . Found in nuclear bodies called gems (Gemini of Cajal bodies) that are often in proximity to Cajal (coiled) bodies. Also found in the cytoplasm.
Tissue Specificity	Colon,Gastric carcinoma,Lung,Thalamus,
Function	function:The SMN complex plays an essential role in spliceosomal snRNP assembly in the cytoplasm and is required for pre-mRNA splicing in the nucleus.,subcellular location:Found in nuclear bodies called gems (Gemini of Cajal bodies) that are often in proximity to Cajal (coiled) bodies. Also found in the cytoplasm.,subunit:Part of the core SMN complex that contains SMN1, SIP1/GEMIN2, DDX20/GEMIN3, GEMIN4, GEMIN5, GEMIN6, GEMIN7, GEMIN8 and STRAP/UNRIP. Binds directly to SMN1 and to the GEMIN6-GEMIN7 heterodimer, mediating their interaction.,
Background	The protein encoded by this gene is part of the SMN complex, which is necessary for spliceosomal snRNP assembly in the cytoplasm and pre-mRNA

Nanjing BYabscience technology Co.,Ltd



splicing in the nucleus. The encoded protein binds to both SMN1 and the GEMIN6/GEMIN7 heterodimer, mediating their interaction. This protein is found in nuclear Gemini of Cajal bodies (gems) and in the cytoplasm. Three transcript variants encoding the same protein have been found for this gene. [provided by RefSeq, May 2010],

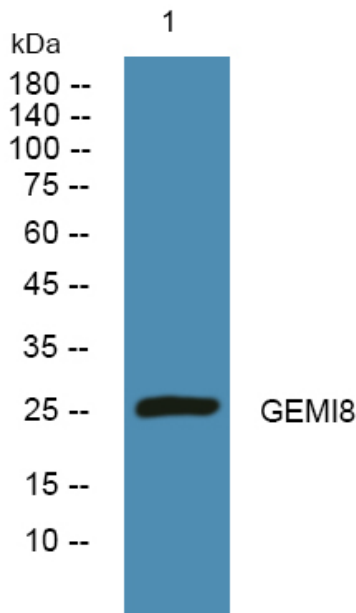
matters needing attention

Avoid repeated freezing and thawing!

Usage suggestions

This product can be used in immunological reaction related experiments. For more information, please consult technical personnel.

Products Images



Western blot analysis of lysates from K562 cells, primary antibody was diluted at 1:1000, 4° over night