



IKBL1 Polyclonal Antibody

| | |
|---------------------------|---|
| Catalog No | BYab-05189 |
| Isotype | IgG |
| Reactivity | Human;Mouse;Rat |
| Applications | WB;ELISA |
| Gene Name | NFKBIL1 IKBL |
| Protein Name | NF-kappa-B inhibitor-like protein 1 (Inhibitor of kappa B-like protein) (I-kappa-B-like protein) (IkappaBL) (Nuclear factor of kappa light polypeptide gene enhancer in B-cells inhibitor-like 1) |
| Immunogen | Synthesized peptide derived from human protein . at AA range: 70-150 |
| Specificity | IKBL1 Polyclonal Antibody detects endogenous levels of protein. |
| Formulation | Liquid in PBS containing 50% glycerol, and 0.02% sodium azide. |
| Source | Polyclonal, Rabbit,IgG |
| Purification | The antibody was affinity-purified from rabbit antiserum by affinity-chromatography using epitope-specific immunogen. |
| Dilution | WB 1:500-2000 ELISA 1:5000-20000 |
| Concentration | 1 mg/ml |
| Purity | ≥90% |
| Storage Stability | -20°C/1 year |
| Synonyms | |
| Observed Band | 41kD |
| Cell Pathway | Nucleus . Nuclear localization with a speckled expression pattern in some cells. Colocalizes with CACTIN in the nucleus. |
| Tissue Specificity | Detected in different cell types including monocytes, T-cells, B-cells and hepatocytes. |
| Function | disease:Mutations in the promoter region of NFKBIL1 represent the second rheumatoid arthritis susceptibility locus within the HLA region [MIM:180300].function:May be a negative regulator of NF-kappa-B activation.,similarity:Contains 2 ANK repeats.,tissue specificity:Detected in different cell types including monocytes, T-cells, B-cells and hepatocytes., |
| Background | This gene encodes a divergent member of the I-kappa-B family of proteins. Its function has not been determined. The gene lies within the major histocompatibility complex (MHC) class I region on chromosome 6. Multiple transcript variants encoding different isoforms have been found for this gene. [provided by RefSeq, Jan 2009], |

Nanjing BYabscience technology Co.,Ltd



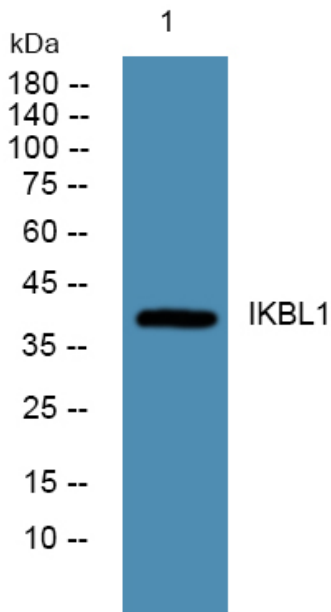
matters needing attention

Avoid repeated freezing and thawing!

Usage suggestions

This product can be used in immunological reaction related experiments. For more information, please consult technical personnel.

Products Images



Western blot analysis of lysates from HCT116 cells, primary antibody was diluted at 1:1000, 4° over night

Nanjing BYabscience technology Co.,Ltd

网址: www.njbybio.com

官方热线: 025-5229-8998

监督电话: 15950492658