



# CIDEA Polyclonal Antibody

<b>Catalog No</b>	BYab-05176
<b>Isotype</b>	IgG
<b>Reactivity</b>	Human;Rat;Mouse;
<b>Applications</b>	WB;ELISA
<b>Gene Name</b>	CIDEA
<b>Protein Name</b>	Cell death activator CIDE-A (Cell death-inducing DFFA-like effector A)
<b>Immunogen</b>	Synthesized peptide derived from human protein . at AA range: 140-220
<b>Specificity</b>	CIDEA Polyclonal Antibody detects endogenous levels of protein.
<b>Formulation</b>	Liquid in PBS containing 50% glycerol, and 0.02% sodium azide.
<b>Source</b>	Polyclonal, Rabbit,IgG
<b>Purification</b>	The antibody was affinity-purified from rabbit antiserum by affinity-chromatography using epitope-specific immunogen.
<b>Dilution</b>	WB 1:500-2000 ELISA 1:5000-20000
<b>Concentration</b>	1 mg/ml
<b>Purity</b>	≥90%
<b>Storage Stability</b>	-20°C/1 year
<b>Synonyms</b>	
<b>Observed Band</b>	24kD
<b>Cell Pathway</b>	Lipid droplet . Nucleus . Enriched at lipid droplet contact sites. Has been shown to localize to mitochondria, where it could interact with UCP1 and hence inhibit UCP1 uncoupling activity (By similarity). These data could not be confirmed (PubMed:18509062) . .
<b>Tissue Specificity</b>	Expressed in omental and subcutaneous adipose tissue (at protein level).
<b>Function</b>	function:Activates apoptosis.,similarity:Contains 1 CIDE-N domain.,subunit:Inhibited by DFFB.,
<b>Background</b>	cell death-inducing DFFA-like effector a(CIDEA) Homo sapiens This gene encodes the homolog of the mouse protein Cidea that has been shown to activate apoptosis. This activation of apoptosis is inhibited by the DNA fragmentation factor DFF45 but not by caspase inhibitors. Mice that lack functional Cidea have higher metabolic rates, higher lipolysis in brown adipose tissue and higher core body temperatures when subjected to cold. These mice are also resistant to diet-induced obesity and diabetes. This suggests that in mice this gene product

Nanjing BYabscience technology Co.,Ltd



plays a role in thermogenesis and lipolysis. Alternatively spliced transcripts have been identified. [provided by RefSeq, Aug 2010],

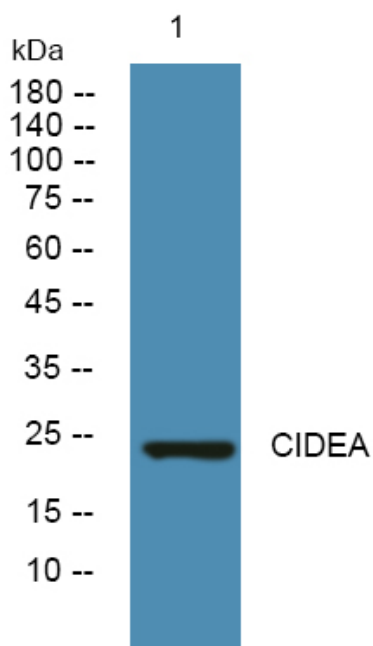
**matters needing attention**

Avoid repeated freezing and thawing!

**Usage suggestions**

This product can be used in immunological reaction related experiments. For more information, please consult technical personnel.

## Products Images



Western blot analysis of lysates from DU145 cells, primary antibody was diluted at 1:1000, 4° over night