



# ITBP2 Polyclonal Antibody

<b>Catalog No</b>	BYab-05111
<b>Isotype</b>	IgG
<b>Reactivity</b>	Human;Mouse
<b>Applications</b>	WB;ELISA
<b>Gene Name</b>	ITGB1BP2 MSTP015
<b>Protein Name</b>	Integrin beta-1-binding protein 2 (Melusin)
<b>Immunogen</b>	Synthesized peptide derived from human protein . at AA range: 10-90
<b>Specificity</b>	ITBP2 Polyclonal Antibody detects endogenous levels of protein.
<b>Formulation</b>	Liquid in PBS containing 50% glycerol, and 0.02% sodium azide.
<b>Source</b>	Polyclonal, Rabbit,IgG
<b>Purification</b>	The antibody was affinity-purified from rabbit antiserum by affinity-chromatography using epitope-specific immunogen.
<b>Dilution</b>	WB 1:500-2000 ELISA 1:5000-20000
<b>Concentration</b>	1 mg/ml
<b>Purity</b>	≥90%
<b>Storage Stability</b>	-20°C/1 year
<b>Synonyms</b>	
<b>Observed Band</b>	38kD
<b>Cell Pathway</b>	Z disc,
<b>Tissue Specificity</b>	Expressed in skeletal and cardiac muscles but not in other tissues.
<b>Function</b>	domain:The tail domain binds to the cytoplasmic domain of both integrin beta-1a and beta-1d isoforms. The presence of Ca(2+) ions does not prevent binding of a fragment consisting of the second cysteine rich repeat and the tail domain but prevents the binding of the full-length protein.,function:May play a role during maturation and/or organization of muscles cells.,similarity:Contains 1 CS domain.,similarity:Contains 2 CHORD domains.,subunit:Interacts with beta-1 integrin subunit. This interaction is regulated by divalent cations, and it occurs only in absence of calcium.,tissue specificity:Expressed in skeletal and cardiac muscles but not in other tissues.,
<b>Background</b>	domain:The tail domain binds to the cytoplasmic domain of both integrin beta-1a and beta-1d isoforms. The presence of Ca(2+) ions does not prevent binding of a

Nanjing BYabscience technology Co.,Ltd



fragment consisting of the second cysteine rich repeat and the tail domain but prevents the binding of the full-length protein.,function:May play a role during maturation and/or organization of muscles cells.,similarity:Contains 1 CS domain.,similarity:Contains 2 CHORD domains.,subunit:Interacts with beta-1 integrin subunit. This interaction is regulated by divalent cations, and it occurs only in absence of calcium.,tissue specificity:Expressed in skeletal and cardiac muscles but not in other tissues.,

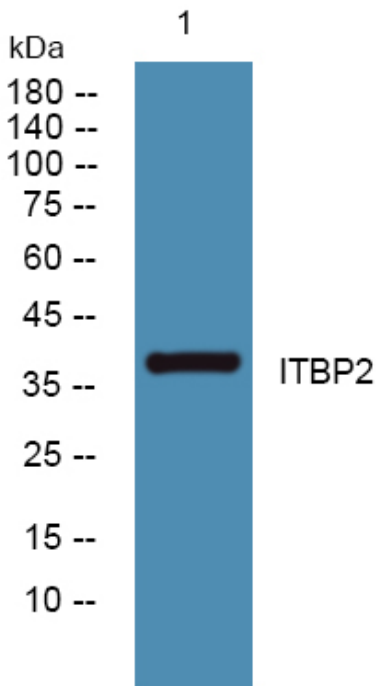
**matters needing attention**

Avoid repeated freezing and thawing!

**Usage suggestions**

This product can be used in immunological reaction related experiments. For more information, please consult technical personnel.

## Products Images



Western blot analysis of lysates from K562 cells, primary antibody was diluted at 1:1000, 4° over night