



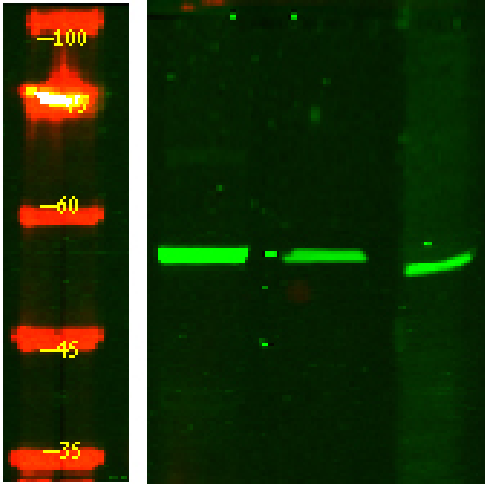
IFRD2 Polyclonal Antibody

Catalog No	BYab-05099
Isotype	IgG
Reactivity	Human;Rat;Mouse;
Applications	WB;ELISA
Gene Name	IFRD2
Protein Name	Interferon-related developmental regulator 2 (Protein SKMC15)
Immunogen	Synthesized peptide derived from human protein . at AA range: 260-340
Specificity	IFRD2 Polyclonal Antibody detects endogenous levels of protein.
Formulation	Liquid in PBS containing 50% glycerol, and 0.02% sodium azide.
Source	Polyclonal, Rabbit,IgG
Purification	The antibody was affinity-purified from rabbit antiserum by affinity-chromatography using epitope-specific immunogen.
Dilution	WB 1:500-2000 ELISA 1:5000-20000
Concentration	1 mg/ml
Purity	≥90%
Storage Stability	-20°C/1 year
Synonyms	
Observed Band	55kD
Cell Pathway	nucleus,
Tissue Specificity	Expressed in a variety of tissues.
Function	similarity:Belongs to the IFRD family.,tissue specificity:Expressed in a variety of tissues.,
Background	similarity:Belongs to the IFRD family.,tissue specificity:Expressed in a variety of tissues.,
matters needing attention	Avoid repeated freezing and thawing!
Usage suggestions	This product can be used in immunological reaction related experiments. For more information, please consult technical personnel.

Nanjing BYabscience technology Co.,Ltd



Products Images



Western Blot analysis of HEK293 lysis, using primary antibody at 1:1000 dilution. Secondary antibody(catalog#:RS23920) was diluted at 1:10000