



# IFN21 Polyclonal Antibody

<b>Catalog No</b>	BYab-05093
<b>Isotype</b>	IgG
<b>Reactivity</b>	Human;Rat;Mouse;
<b>Applications</b>	WB;ELISA
<b>Gene Name</b>	IFNA21
<b>Protein Name</b>	Interferon alpha-21 (IFN-alpha-21) (Interferon alpha-F) (LeIF F)
<b>Immunogen</b>	Synthesized peptide derived from human protein . at AA range: 1-80
<b>Specificity</b>	IFN21 Polyclonal Antibody detects endogenous levels of protein.
<b>Formulation</b>	Liquid in PBS containing 50% glycerol, and 0.02% sodium azide.
<b>Source</b>	Polyclonal, Rabbit,IgG
<b>Purification</b>	The antibody was affinity-purified from rabbit antiserum by affinity-chromatography using epitope-specific immunogen.
<b>Dilution</b>	WB 1:500-2000 ELISA 1:5000-20000
<b>Concentration</b>	1 mg/ml
<b>Purity</b>	≥90%
<b>Storage Stability</b>	-20°C/1 year
<b>Synonyms</b>	
<b>Observed Band</b>	20kD
<b>Cell Pathway</b>	Secreted.
<b>Tissue Specificity</b>	Lymphoblast,
<b>Function</b>	function:Produced by macrophages, IFN-alpha have antiviral activities. Interferon stimulates the production of two enzymes: a protein kinase and an oligoadenylate synthetase.,similarity:Belongs to the alpha/beta interferon family.,
<b>Background</b>	This gene is a member of the alpha interferon gene cluster on the short arm of chromosome 9. Interferons are cytokines produced in response to viral infection that mediate the immune response and interfere with viral replication. The encoded protein is a type I interferon and may play a specific role in the antiviral response to rubella virus. [provided by RefSeq, Sep 2011],
<b>matters needing attention</b>	Avoid repeated freezing and thawing!

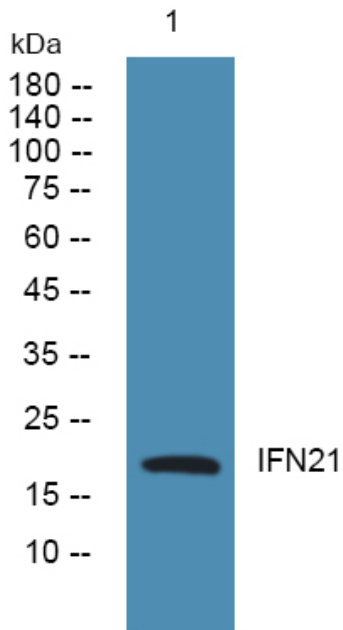
Nanjing BYabscience technology Co.,Ltd



### Usage suggestions

This product can be used in immunological reaction related experiments. For more information, please consult technical personnel.

## Products Images



Western blot analysis of lysates from SW480 cells, primary antibody was diluted at 1:1000, 4° over night