



IFN10 Polyclonal Antibody

Catalog No	BYab-05089
Isotype	IgG
Reactivity	Human;Rat;Mouse;
Applications	WB;ELISA
Gene Name	IFNA10
Protein Name	Interferon alpha-10 (IFN-alpha-10) (Interferon alpha-6L) (Interferon alpha-C) (LeIF C)
Immunogen	Synthesized peptide derived from human protein . at AA range: 30-110
Specificity	IFN10 Polyclonal Antibody detects endogenous levels of protein.
Formulation	Liquid in PBS containing 50% glycerol, and 0.02% sodium azide.
Source	Polyclonal, Rabbit,IgG
Purification	The antibody was affinity-purified from rabbit antiserum by affinity-chromatography using epitope-specific immunogen.
Dilution	WB 1:500-2000 ELISA 1:5000-20000
Concentration	1 mg/ml
Purity	≥90%
Storage Stability	-20°C/1 year
Synonyms	
Observed Band	20kD
Cell Pathway	Secreted.
Tissue Specificity	PCR rescued clones,
Function	function:Produced by macrophages, IFN-alpha have antiviral activities. Interferon stimulates the production of two enzymes: a protein kinase and an oligoadenylate synthetase.,similarity:Belongs to the alpha/beta interferon family.,
Background	This gene encodes a protein that belongs to the type I interferon family of proteins, and is located in a cluster of alpha interferon genes on chromosome 9. Interferons are small regulatory molecules that function in cell signaling in response to viruses and other pathogens or tumor cells. This gene is intronless and the encoded protein is secreted. [provided by RefSeq, Aug 2013],
matters needing attention	Avoid repeated freezing and thawing!

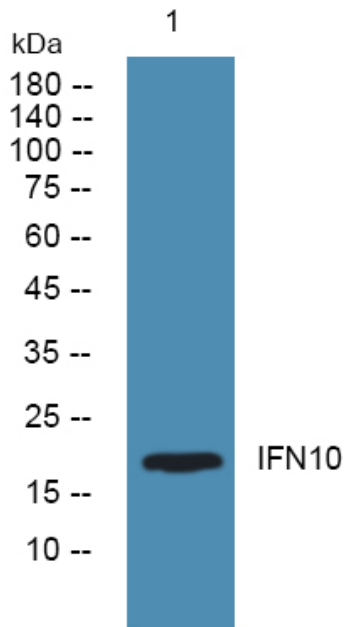
Nanjing BYabscience technology Co.,Ltd



Usage suggestions

This product can be used in immunological reaction related experiments. For more information, please consult technical personnel.

Products Images



Western blot analysis of lysates from HCT116 cells, primary antibody was diluted at 1:1000, 4° over night