



GPDA Polyclonal Antibody

Catalog No	BYab-05077
Isotype	IgG
Reactivity	Human;Mouse;Rat
Applications	WB;ELISA
Gene Name	GPD1
Protein Name	Glycerol-3-phosphate dehydrogenase [NAD(+)], cytoplasmic (GPD-C) (GPDH-C) (EC 1.1.1.8)
Immunogen	Synthesized peptide derived from human protein . at AA range: 210-290
Specificity	GPDA Polyclonal Antibody detects endogenous levels of protein.
Formulation	Liquid in PBS containing 50% glycerol, and 0.02% sodium azide.
Source	Polyclonal, Rabbit,IgG
Purification	The antibody was affinity-purified from rabbit antiserum by affinity-chromatography using epitope-specific immunogen.
Dilution	WB 1:500-2000 ELISA 1:5000-20000
Concentration	1 mg/ml
Purity	≥90%
Storage Stability	-20°C/1 year
Synonyms	
Observed Band	38kD
Cell Pathway	Cytoplasm .
Tissue Specificity	Expressed in liver (at protein level).
Function	catalytic activity:sn-glycerol 3-phosphate + NAD(+) = glycerone phosphate + NADH.,enzyme regulation:Inhibited by zinc ions and sulfate.,similarity:Belongs to the NAD-dependent glycerol-3-phosphate dehydrogenase family.,subunit:Homodimer.,
Background	This gene encodes a member of the NAD-dependent glycerol-3-phosphate dehydrogenase family. The encoded protein plays a critical role in carbohydrate and lipid metabolism by catalyzing the reversible conversion of dihydroxyacetone phosphate (DHAP) and reduced nicotine adenine dinucleotide (NADH) to glycerol-3-phosphate (G3P) and NAD+. The encoded cytosolic protein and mitochondrial glycerol-3-phosphate dehydrogenase also form a glycerol phosphate shuttle that facilitates the transfer of reducing equivalents from the

Nanjing BYabscience technology Co.,Ltd



cytosol to mitochondria. Mutations in this gene are a cause of transient infantile hypertriglyceridemia. Alternatively spliced transcript variants encoding multiple isoforms have been observed for this gene. [provided by RefSeq, Mar 2012],

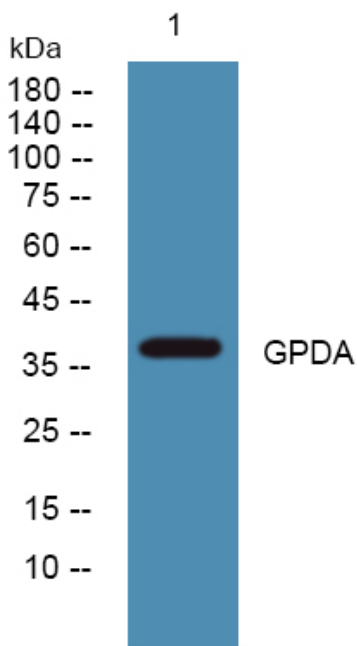
matters needing attention

Avoid repeated freezing and thawing!

Usage suggestions

This product can be used in immunological reaction related experiments. For more information, please consult technical personnel.

Products Images



Western blot analysis of lysates from HCT116 cells, primary antibody was diluted at 1:1000, 4° over night