



FAT1 Polyclonal Antibody

Catalog No	BYab-05071
Isotype	IgG
Reactivity	Human;Rat;Mouse;
Applications	IHC;IF
Gene Name	FAT1 CDHF7 FAT
Protein Name	Protocadherin Fat 1 (Cadherin family member 7) (Cadherin-related tumor suppressor homolog) (Protein fat homolog) [Cleaved into: Protocadherin Fat 1, nuclear form]
Immunogen	Synthesized peptide derived from human protein . at AA range: 1140-1220
Specificity	FAT1 Polyclonal Antibody detects endogenous levels of protein.
Formulation	Liquid in PBS containing 50% glycerol, and 0.02% sodium azide.
Source	Polyclonal, Rabbit,IgG
Purification	The antibody was affinity-purified from rabbit antiserum by affinity-chromatography using epitope-specific immunogen.
Dilution	IHC-p 1:50-300. IF 1:50-200
Concentration	1 mg/ml
Purity	≥90%
Storage Stability	-20°C/1 year
Synonyms	
Observed Band	504kD
Cell Pathway	[Protocadherin Fat 1]: Cell membrane ; Single-pass type I membrane protein . ; [Protocadherin Fat 1, nuclear form]: Nucleus .
Tissue Specificity	Expressed in many epithelial and some endothelial and smooth muscle cells.
Function	function:Could function as a cell-adhesion protein.,PTM:Phosphorylated upon DNA damage, probably by ATM or ATR.,similarity:Contains 1 laminin G-like domain.,similarity:Contains 34 cadherin domains.,similarity:Contains 5 EGF-like domains.,tissue specificity:Expressed in many epithelial and some endothelial and smooth muscle cells.,
Background	This gene is an ortholog of the Drosophila fat gene, which encodes a tumor suppressor essential for controlling cell proliferation during Drosophila development. The gene product is a member of the cadherin superfamily, a group of integral membrane proteins characterized by the presence of cadherin-type repeats. In addition to containing 34 tandem cadherin-type repeats, the gene

Nanjing BYabscience technology Co.,Ltd



product has five epidermal growth factor (EGF)-like repeats and one laminin A-G domain. This gene is expressed at high levels in a number of fetal epithelia. Its product probably functions as an adhesion molecule and/or signaling receptor, and is likely to be important in developmental processes and cell communication. Transcript variants derived from alternative splicing and/or alternative promoter usage exist, but they have not been fully described. [provided by RefSeq, Jul 2008],

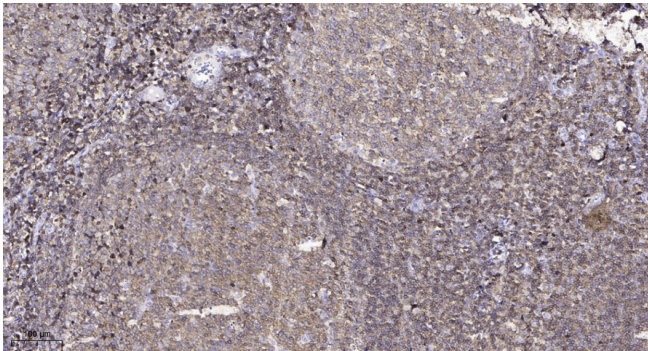
matters needing attention

Avoid repeated freezing and thawing!

Usage suggestions

This product can be used in immunological reaction related experiments. For more information, please consult technical personnel.

Products Images



Immunohistochemical analysis of paraffin-embedded human tonsil. 1, Antibody was diluted at 1:200(4° overnight). 2, Tris-EDTA,pH9.0 was used for antigen retrieval. 3,Secondary antibody was diluted at 1:200(room temperature, 45min).