



CDK3 Polyclonal Antibody

Catalog No	BYab-05047
Isotype	IgG
Reactivity	Human;Mouse
Applications	WB;ELISA
Gene Name	CDK3 CDKN3
Protein Name	Cyclin-dependent kinase 3 (EC 2.7.11.22) (Cell division protein kinase 3)
Immunogen	Synthesized peptide derived from human protein . at AA range: 10-90
Specificity	CDK3 Polyclonal Antibody detects endogenous levels of protein.
Formulation	Liquid in PBS containing 50% glycerol, and 0.02% sodium azide.
Source	Polyclonal, Rabbit,IgG
Purification	The antibody was affinity-purified from rabbit antiserum by affinity-chromatography using epitope-specific immunogen.
Dilution	WB 1:500-2000 ELISA 1:5000-20000
Concentration	1 mg/ml
Purity	≥90%
Storage Stability	-20°C/1 year
Synonyms	
Observed Band	33kD
Cell Pathway	
Tissue Specificity	Expressed in cancer cell lines and glioblastoma tissue.
Function	catalytic activity:ATP + a protein = ADP + a phosphoprotein.,function:Probably involved in the control of the cell cycle. Interacts with a yet unknown type of cyclin. Can phosphorylate histone H1.,similarity:Belongs to the protein kinase superfamily. CMGC Ser/Thr protein kinase family. CDC2/CDKX subfamily.,similarity:Contains 1 protein kinase domain.,subunit:Interacts with CABLES1.,
Background	cyclin dependent kinase 3(CDK3) Homo sapiens This gene encodes a member of the cyclin-dependent protein kinase family. The protein promotes entry into S phase, in part by activating members of the E2F family of transcription factors. The protein also associates with cyclin C and phosphorylates the retinoblastoma 1 protein to promote exit from G0. [provided by RefSeq, Jul 2008],

Nanjing BYabscience technology Co.,Ltd



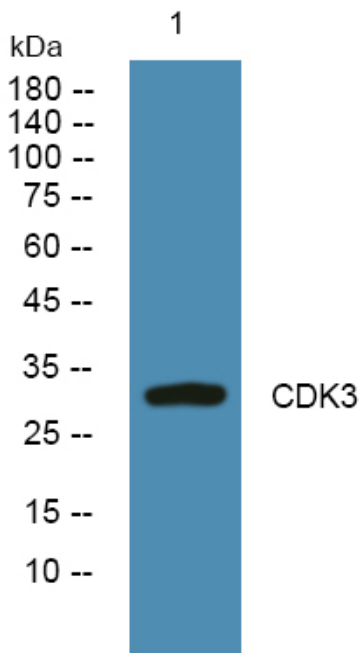
matters needing attention

Avoid repeated freezing and thawing!

Usage suggestions

This product can be used in immunological reaction related experiments. For more information, please consult technical personnel.

Products Images



Western blot analysis of lysates from KB cells, primary antibody was diluted at 1:1000, 4° over night