



MLL4 Polyclonal Antibody

| | |
|---------------------------|---|
| Catalog No | BYab-05032 |
| Isotype | IgG |
| Reactivity | Human;Mouse |
| Applications | IHC;IF |
| Gene Name | WBP7 HRX2 KIAA0304 KMT2B MLL2 MLL4 TRX2 |
| Protein Name | Histone-lysine N-methyltransferase MLL4 (EC 2.1.1.43) (Lysine N-methyltransferase 2B) (KMT2B) (Myeloid/lymphoid or mixed-lineage leukemia protein 4) (Trithorax homolog 2) (WW domain-binding protein 7) |
| Immunogen | Synthesized peptide derived from human protein . at AA range: 1060-1140 |
| Specificity | MLL4 Polyclonal Antibody detects endogenous levels of protein. |
| Formulation | Liquid in PBS containing 50% glycerol, and 0.02% sodium azide. |
| Source | Polyclonal, Rabbit,IgG |
| Purification | The antibody was affinity-purified from rabbit antiserum by affinity-chromatography using epitope-specific immunogen. |
| Dilution | IHC-p 1:50-300. IF 1:50-200 |
| Concentration | 1 mg/ml |
| Purity | ≥90% |
| Storage Stability | -20°C/1 year |
| Synonyms | |
| Observed Band | 298kD |
| Cell Pathway | Nucleus . |
| Tissue Specificity | Widely expressed. Highest levels in testis. Also found in brain with higher expression in the cerebellum than in any other region, bone marrow, heart, muscle, kidney, placenta, spleen, thymus, prostate, ovary, intestine, colon, peripheral blood lymphocytes and pancreas. Often amplified in pancreatic carcinomas. |
| Function | catalytic activity:S-adenosyl-L-methionine + histone L-lysine = S-adenosyl-L-homocysteine + histone N(6)-methyl-L-lysine.,caution:This protein was first named MLL2 by PubMed:10637508 and PubMed:10409430. MLL2 corresponds to another protein located on chromosome 12 (see AC O14686).,disease:Often amplified in pancreatic carcinomas.,function:Histone methyltransferase. Methylates 'Lys-4' of histone H3. H3 'Lys-4' methylation represents a specific tag for epigenetic transcriptional |

Nanjing BYabscience technology Co.,Ltd



activation.,PTM:Phosphorylated upon DNA damage, probably by ATM or ATR.,similarity:Belongs to the histone-lysine methyltransferase family. TRX/MLL subfamily.,similarity:Contains 1 CXXC-type zinc finger.,similarity:Contains 1 post-SET domain.,similarity:Contains 1 SET domain.,similarity:Contains 3 A.T hook DNA-binding domains.,similarity:Contains 3 PHD-type zinc fingers.,subunit:Component of the MLL3/MLL4 complex, a

Background

This gene encodes a protein which contains multiple domains including a CXXC zinc finger, three PHD zinc fingers, two FY-rich domains, and a SET (suppressor of variegation, enhancer of zeste, and trithorax) domain. The SET domain is a conserved C-terminal domain that characterizes proteins of the MLL (mixed-lineage leukemia) family. This gene is ubiquitously expressed in adult tissues. It is also amplified in solid tumor cell lines, and may be involved in human cancer. Two alternatively spliced transcript variants encoding distinct isoforms have been reported for this gene, however, the full length nature of the shorter transcript is not known. [provided by RefSeq, Jul 2008],

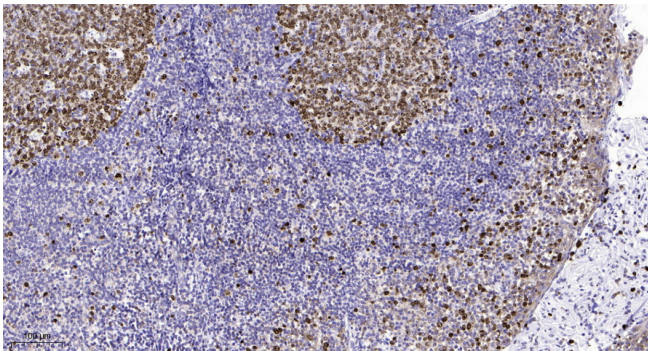
matters needing attention

Avoid repeated freezing and thawing!

Usage suggestions

This product can be used in immunological reaction related experiments. For more information, please consult technical personnel.

Products Images



Immunohistochemical analysis of paraffin-embedded human tonsil. 1, Antibody was diluted at 1:200(4° overnight). 2, Tris-EDTA,pH9.0 was used for antigen retrieval. 3,Secondary antibody was diluted at 1:200(room temperature, 45min).