



# CBX8 Polyclonal Antibody

<b>Catalog No</b>	BYab-05023
<b>Isotype</b>	IgG
<b>Reactivity</b>	Human;Mouse
<b>Applications</b>	WB;ELISA
<b>Gene Name</b>	CBX8 PC3 RC1
<b>Protein Name</b>	Chromobox protein homolog 8 (Polycomb 3 homolog) (Pc3) (hPc3) (Rectachrome 1)
<b>Immunogen</b>	Synthesized peptide derived from human protein . at AA range: 140-220
<b>Specificity</b>	CBX8 Polyclonal Antibody detects endogenous levels of protein.
<b>Formulation</b>	Liquid in PBS containing 50% glycerol, and 0.02% sodium azide.
<b>Source</b>	Polyclonal, Rabbit,IgG
<b>Purification</b>	The antibody was affinity-purified from rabbit antiserum by affinity-chromatography using epitope-specific immunogen.
<b>Dilution</b>	WB 1:500-2000 ELISA 1:5000-20000
<b>Concentration</b>	1 mg/ml
<b>Purity</b>	≥90%
<b>Storage Stability</b>	-20°C/1 year
<b>Synonyms</b>	
<b>Observed Band</b>	42kD
<b>Cell Pathway</b>	Nucleus .
<b>Tissue Specificity</b>	Colon carcinoma,Embryo,Lung,Muscle,
<b>Function</b>	function:Component of the Polycomb group (PcG) multiprotein PRC1 complex, a complex required to maintain the transcriptionally repressive state of many genes, including Hox genes, throughout development. PcG PRC1 complex acts via chromatin remodeling and modification of histones; it mediates monoubiquitination of histone H2A 'Lys-119', rendering chromatin heritably changed in its expressibility.,similarity:Contains 1 chromo domain.,subunit:Component of chromatin-associated class II polycomb repressive complex 1 (PRC1/hPRC-H) at least composed of PCGF2/RNF110, BMI1/PCGF4, CBX2/M33, CBX4/PC2, CBX8/PC3, PHC1, PHC2, PHC3, SCM1, RING1 and RNF2/RING2. Interacts with MLLT3.,

Nanjing BYabscience technology Co.,Ltd



### Background

function:Component of the Polycomb group (PcG) multiprotein PRC1 complex, a complex required to maintain the transcriptionally repressive state of many genes, including Hox genes, throughout development. PcG PRC1 complex acts via chromatin remodeling and modification of histones; it mediates monoubiquitination of histone H2A 'Lys-119', rendering chromatin heritably changed in its expressibility.,similarity:Contains 1 chromo domain.,subunit:Component of chromatin-associated class II polycomb repressive complex 1 (PRC1/hPRC-H) at least composed of PCGF2/RNF110, BMI1/PCGF4, CBX2/M33, CBX4/PC2, CBX8/PC3, PHC1, PHC2, PHC3, SCMH1, RING1 and RNF2/RING2. Interacts with MLLT3.,

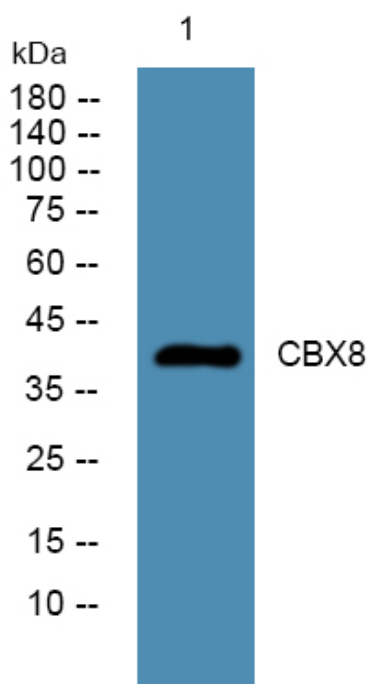
### matters needing attention

Avoid repeated freezing and thawing!

### Usage suggestions

This product can be used in immunological reaction related experiments. For more information, please consult technical personnel.

## Products Images



Western blot analysis of lysates from K562 cells, primary antibody was diluted at 1:1000, 4° over night