



SOX7 Polyclonal Antibody

Catalog No	BYab-05019
Isotype	IgG
Reactivity	Human;Mouse
Applications	WB;ELISA
Gene Name	SOX7
Protein Name	Transcription factor SOX-7
Immunogen	Synthesized peptide derived from part region of human protein
Specificity	SOX7 Polyclonal Antibody detects endogenous levels of protein.
Formulation	Liquid in PBS containing 50% glycerol, and 0.02% sodium azide.
Source	Polyclonal, Rabbit,IgG
Purification	The antibody was affinity-purified from rabbit antiserum by affinity-chromatography using epitope-specific immunogen.
Dilution	WB 1:500-2000 ELISA 1:5000-20000
Concentration	1 mg/ml
Purity	≥90%
Storage Stability	-20°C/1 year
Synonyms	
Observed Band	42kD
Cell Pathway	Nucleus . Cytoplasm .
Tissue Specificity	Widely expressed in adult and fetal tissues. Present both in mesenchymal and epithelial cells in some adult tissues, including colon. Tends to be down-regulated in prostate adenocarcinomas and colorectal tumors due to promoter hypermethylation.
Function	function:Transcriptional repressor. Binds to the DNA sequence 5'-AACAAAT-3',similarity:Contains 1 HMG box DNA-binding domain.,
Background	SRY-box 7(SOX7) Homo sapiens This gene encodes a member of the SOX (SRY-related HMG-box) family of transcription factors involved in the regulation of embryonic development and in the determination of the cell fate. The encoded protein may act as a transcriptional regulator after forming a protein complex with other proteins. The protein may play a role in tumorigenesis. A similar protein in mice is involved in the regulation of the wntless-type MMTV integration site family (Wnt) pathway. [provided by RefSeq, Jul 2008],

Nanjing BYabscience technology Co.,Ltd



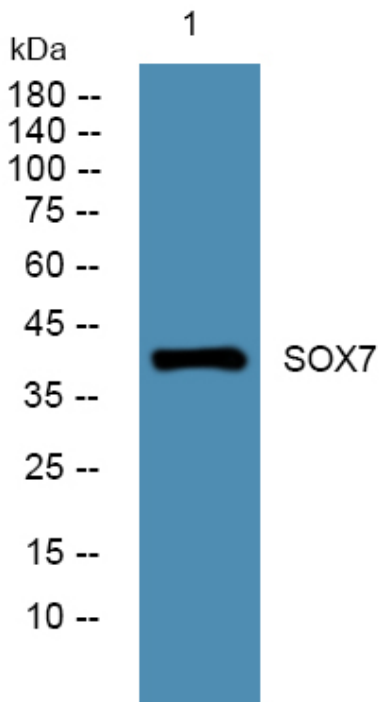
matters needing attention

Avoid repeated freezing and thawing!

Usage suggestions

This product can be used in immunological reaction related experiments. For more information, please consult technical personnel.

Products Images



Western blot analysis of lysates from SW480 cells, primary antibody was diluted at 1:1000, 4° over night