



KPSH2 Polyclonal Antibody

Catalog No	BYab-05017
Isotype	IgG
Reactivity	Human;Rat;Mouse;
Applications	WB;ELISA
Gene Name	PSKH2
Protein Name	Serine/threonine-protein kinase H2 (EC 2.7.11.1) (Protein serine kinase H2) (PSK-H2)
Immunogen	Synthesized peptide derived from human protein . at AA range: 30-110
Specificity	KPSH2 Polyclonal Antibody detects endogenous levels of protein.
Formulation	Liquid in PBS containing 50% glycerol, and 0.02% sodium azide.
Source	Polyclonal, Rabbit,IgG
Purification	The antibody was affinity-purified from rabbit antiserum by affinity-chromatography using epitope-specific immunogen.
Dilution	WB 1:500-2000 ELISA 1:5000-20000
Concentration	1 mg/ml
Purity	≥90%
Storage Stability	-20°C/1 year
Synonyms	
Observed Band	42kD
Cell Pathway	
Tissue Specificity	
Function	catalytic activity:ATP + a protein = ADP + a phosphoprotein.,caution:Asn-183 is present instead of the conserved Asp which is expected to be an active site residue.,similarity:Belongs to the protein kinase superfamily. CAMK Ser/Thr protein kinase family.,similarity:Contains 1 protein kinase domain.,
Background	catalytic activity:ATP + a protein = ADP + a phosphoprotein.,caution:Asn-183 is present instead of the conserved Asp which is expected to be an active site residue.,similarity:Belongs to the protein kinase superfamily. CAMK Ser/Thr protein kinase family.,similarity:Contains 1 protein kinase domain.,
matters needing attention	Avoid repeated freezing and thawing!

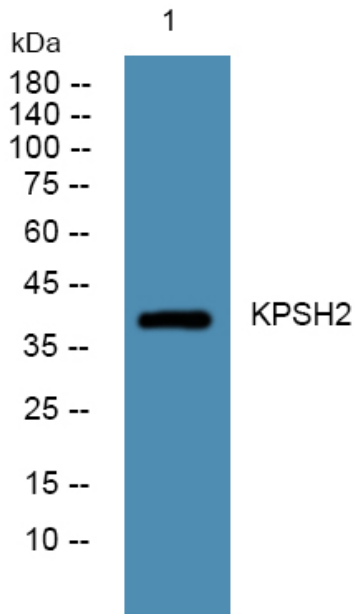
Nanjing BYabscience technology Co.,Ltd



Usage suggestions

This product can be used in immunological reaction related experiments. For more information, please consult technical personnel.

Products Images



Western blot analysis of lysates from SH-SY5Y cells, primary antibody was diluted at 1:1000, 4° over night