



CT47A Polyclonal Antibody

Catalog No	BYab-05000
Isotype	IgG
Reactivity	Human;Rat;Mouse;
Applications	WB;ELISA
Gene Name	CT47A1 CT47.1; CT47A2 CT47.2; CT47A3 CT47.3; CT47A4 CT47.4; CT47A5 CT47.5; CT47A6 CT47.6; CT47A7 CT47.7; CT47A8 CT47.8; CT47A9 CT47.9; CT47A10 CT47.10; CT47A11 CT47.11; CT47A12 CT47.12
Protein Name	Cancer/testis antigen 47A (Cancer/testis antigen 47) (CT47)
Immunogen	Synthesized peptide derived from human protein . at AA range: 210-290
Specificity	CT47A Polyclonal Antibody detects endogenous levels of protein.
Formulation	Liquid in PBS containing 50% glycerol, and 0.02% sodium azide.
Source	Polyclonal, Rabbit,IgG
Purification	The antibody was affinity-purified from rabbit antiserum by affinity-chromatography using epitope-specific immunogen.
Dilution	WB 1:500-2000 ELISA 1:5000-20000
Concentration	1 mg/ml
Purity	≥90%
Storage Stability	-20°C/1 year
Synonyms	
Observed Band	31kD
Cell Pathway	
Tissue Specificity	Strongly expressed in testis, low expression in placenta, and very low expression in brain.
Function	tissue specificity:Strongly expressed in testis, low expression in placenta, and very low expression in brain.,
Background	This locus represents a member of the cancer/testis gene family 47. This family, also known as CT47, is comprised of 13 nearly identical loci clustered at Xq24. [provided by RefSeq, Sep 2010],
matters needing attention	Avoid repeated freezing and thawing!

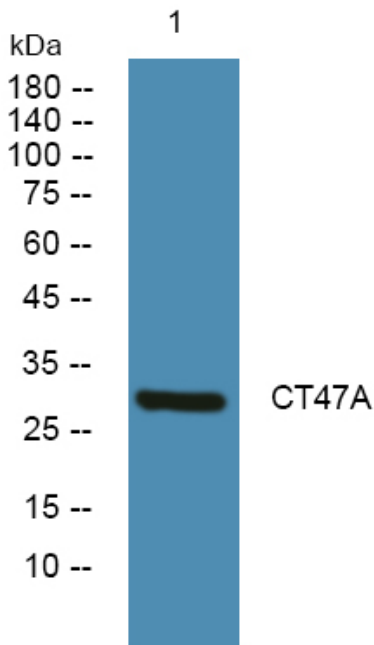
Nanjing BYabscience technology Co.,Ltd



Usage suggestions

This product can be used in immunological reaction related experiments. For more information, please consult technical personnel.

Products Images



Western blot analysis of lysates from A431 cells, primary antibody was diluted at 1:1000, 4° over night