



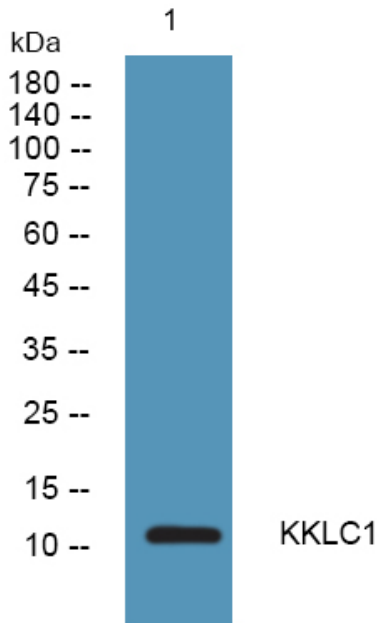
KKLC1 Polyclonal Antibody

Catalog No	BYab-04999
Isotype	IgG
Reactivity	Human;Rat;Mouse;
Applications	WB;ELISA
Gene Name	KKLC1 CXorf61
Protein Name	Kita-kyushu lung cancer antigen 1 (KK-LC-1) (Cancer/testis antigen 83) (CT83)
Immunogen	Synthesized peptide derived from human protein . at AA range: 30-110
Specificity	KKLC1 Polyclonal Antibody detects endogenous levels of protein.
Formulation	Liquid in PBS containing 50% glycerol, and 0.02% sodium azide.
Source	Polyclonal, Rabbit,IgG
Purification	The antibody was affinity-purified from rabbit antiserum by affinity-chromatography using epitope-specific immunogen.
Dilution	WB 1:500-2000 ELISA 1:5000-20000
Concentration	1 mg/ml
Purity	≥90%
Storage Stability	-20°C/1 year
Synonyms	
Observed Band	12kD
Cell Pathway	Cell membrane ; Single-pass type II membrane protein .
Tissue Specificity	Specifically expressed in testis. Expressed by cancer cell lines.
Function	tissue specificity:Specifically expressed in testis. Expressed by cancer cell lines.,
Background	tissue specificity:Specifically expressed in testis. Expressed by cancer cell lines.,
matters needing attention	Avoid repeated freezing and thawing!
Usage suggestions	This product can be used in immunological reaction related experiments. For more information, please consult technical personnel.

Nanjing BYabscience technology Co.,Ltd



Products Images



Western blot analysis of lysates from K562 cells,
primary antibody was diluted at 1:1000, 4° over night