



# TAL2 Polyclonal Antibody

<b>Catalog No</b>	BYab-04996
<b>Isotype</b>	IgG
<b>Reactivity</b>	Human;Mouse
<b>Applications</b>	WB;ELISA
<b>Gene Name</b>	TAL2 BHLHA19
<b>Protein Name</b>	T-cell acute lymphocytic leukemia protein 2 (TAL-2) (Class A basic helix-loop-helix protein 19) (bHLHa19)
<b>Immunogen</b>	Synthesized peptide derived from human protein . at AA range: 1-80
<b>Specificity</b>	TAL2 Polyclonal Antibody detects endogenous levels of protein.
<b>Formulation</b>	Liquid in PBS containing 50% glycerol, and 0.02% sodium azide.
<b>Source</b>	Polyclonal, Rabbit,IgG
<b>Purification</b>	The antibody was affinity-purified from rabbit antiserum by affinity-chromatography using epitope-specific immunogen.
<b>Dilution</b>	WB 1:500-2000 ELISA 1:5000-20000
<b>Concentration</b>	1 mg/ml
<b>Purity</b>	≥90%
<b>Storage Stability</b>	-20°C/1 year
<b>Synonyms</b>	
<b>Observed Band</b>	11kD
<b>Cell Pathway</b>	nucleus,
<b>Tissue Specificity</b>	
<b>Function</b>	disease:A chromosomal aberration involving TAL2 may be a cause of some T-cell acute lymphoblastic leukemia (T-ALL). Translocation t(7;9)(q34;q32) with TCRB.,similarity:Contains 1 basic helix-loop-helix (bHLH) domain.,
<b>Background</b>	This intronless gene encodes a helix-loop-helix protein. Translocations between this gene on chromosome 9 and the T-cell receptor beta-chain locus on chromosome 7 have been associated with activation of the T-cell acute lymphocytic leukemia 2 gene and T-cell acute lymphoblastic leukemia. [provided by RefSeq, Mar 2009],
<b>matters needing attention</b>	Avoid repeated freezing and thawing!

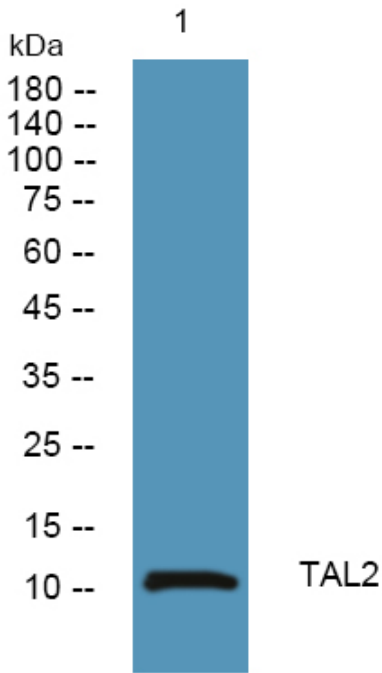
Nanjing BYabscience technology Co.,Ltd



**Usage suggestions**

This product can be used in immunological reaction related experiments. For more information, please consult technical personnel.

**Products Images**



Western blot analysis of lysates from KB cells, primary antibody was diluted at 1:1000, 4° over night