



# NOCT Polyclonal Antibody

<b>Catalog No</b>	BYab-04991
<b>Isotype</b>	IgG
<b>Reactivity</b>	Human;Mouse;Rat
<b>Applications</b>	WB;ELISA
<b>Gene Name</b>	CCRN4L CCR4 NOC
<b>Protein Name</b>	Nocturnin (CCR4 protein homolog)
<b>Immunogen</b>	Synthesized peptide derived from human protein . at AA range: 100-180
<b>Specificity</b>	NOCT Polyclonal Antibody detects endogenous levels of protein.
<b>Formulation</b>	Liquid in PBS containing 50% glycerol, and 0.02% sodium azide.
<b>Source</b>	Polyclonal, Rabbit,IgG
<b>Purification</b>	The antibody was affinity-purified from rabbit antiserum by affinity-chromatography using epitope-specific immunogen.
<b>Dilution</b>	WB 1:500-2000 ELISA 1:5000-20000
<b>Concentration</b>	1 mg/ml
<b>Purity</b>	≥90%
<b>Storage Stability</b>	-20°C/1 year
<b>Synonyms</b>	
<b>Observed Band</b>	47kD
<b>Cell Pathway</b>	Cytoplasm . Nucleus . Cytoplasm, perinuclear region . Mitochondrion .
<b>Tissue Specificity</b>	Adipose tissue. Expression is higher in subcutaneous adipose tissue as compared to visceral adipose tissue.
<b>Function</b>	function:Component of the circadian clock or downstream effector of clock function. Exhibits a high amplitude circadian rhythm with maximal levels in early evening. In constant darkness or constant light, the amplitude of the rhythm decreases.,similarity:Belongs to the CCR4/nocturin family.,
<b>Background</b>	nocturnin(NOCT) Homo sapiens The protein encoded by this gene is highly similar to Nocturnin, a gene identified as a circadian clock regulated gene in Xenopus laevis. This protein and Nocturnin protein share similarity with the C-terminal domain of a yeast transcription factor, carbon catabolite repression 4 (CCR4). The mRNA abundance of a similar gene in mouse has been shown to exhibit circadian rhythmicity, which suggests a role for this protein in clock function or as a circadian clock effector. [provided by RefSeq, Jul 2008],

Nanjing BYabscience technology Co.,Ltd



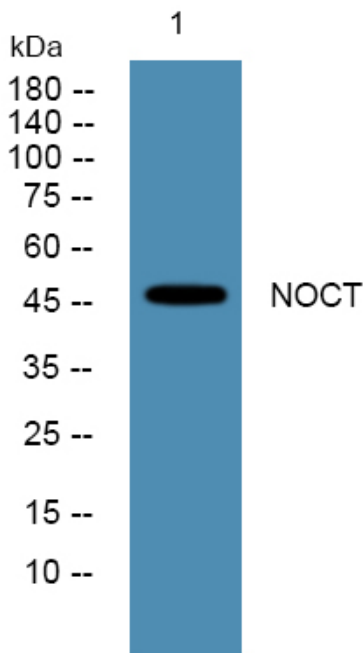
**matters needing attention**

Avoid repeated freezing and thawing!

**Usage suggestions**

This product can be used in immunological reaction related experiments. For more information, please consult technical personnel.

## Products Images



Western blot analysis of lysates from PC12 cells, primary antibody was diluted at 1:1000, 4° over night