



EFNB2 Polyclonal Antibody

Catalog No	BYab-04973
Isotype	IgG
Reactivity	Human;Mouse
Applications	WB;ELISA
Gene Name	EFNB2 EPLG5 HTKL LERK5
Protein Name	Ephrin-B2 (EPH-related receptor tyrosine kinase ligand 5) (LERK-5) (HTK ligand) (HTK-L)
Immunogen	Synthesized peptide derived from human protein . at AA range: 210-290
Specificity	EFNB2 Polyclonal Antibody detects endogenous levels of protein.
Formulation	Liquid in PBS containing 50% glycerol, and 0.02% sodium azide.
Source	Polyclonal, Rabbit,IgG
Purification	The antibody was affinity-purified from rabbit antiserum by affinity-chromatography using epitope-specific immunogen.
Dilution	WB 1:500-2000 ELISA 1:5000-20000
Concentration	1 mg/ml
Purity	≥90%
Storage Stability	-20°C/1 year
Synonyms	
Observed Band	36kD
Cell Pathway	Cell membrane ; Single-pass type I membrane protein . Cell junction, adherens junction .
Tissue Specificity	Lung and kidney.
Function	function: Binds to the receptor tyrosine kinases EPHB4 and EPHA3. May play a role in constraining the orientation of longitudinally projecting axons.,PTM: Inducible phosphorylation of tyrosine residues in the cytoplasmic domain.,similarity: Belongs to the ephrin family.,subunit: Interacts with PDZRN3 (By similarity). Binds to the receptor tyrosine kinases EPHB4 and EPHA3. Binds to Nipah virus G protein.,tissue specificity: Lung and kidney.,
Background	This gene encodes a member of the ephrin (EPH) family. The ephrins and EPH-related receptors comprise the largest subfamily of receptor protein-tyrosine kinases and have been implicated in mediating developmental events, especially in the nervous system and in erythropoiesis. Based on their structures and sequence relationships, ephrins are divided into the ephrin-A (EFNA) class, which

Nanjing BYabscience technology Co.,Ltd



are anchored to the membrane by a glycosylphosphatidylinositol linkage, and the ephrin-B (EFNB) class, which are transmembrane proteins. This gene encodes an EFNB class ephrin which binds to the EPHB4 and EPHA3 receptors. [provided by RefSeq, Jul 2008],

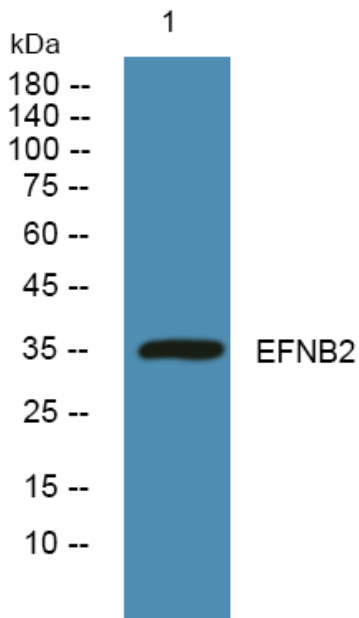
matters needing attention

Avoid repeated freezing and thawing!

Usage suggestions

This product can be used in immunological reaction related experiments. For more information, please consult technical personnel.

Products Images



Western blot analysis of lysates from K562 cells, primary antibody was diluted at 1:1000, 4° over night