



# T2AG Polyclonal Antibody

<b>Catalog No</b>	BYab-04972
<b>Isotype</b>	IgG
<b>Reactivity</b>	Human;Mouse;Rat
<b>Applications</b>	WB;ELISA
<b>Gene Name</b>	GTF2A2 TF2A2
<b>Protein Name</b>	Transcription initiation factor IIA subunit 2 (General transcription factor IIA subunit 2) (TFIIA p12 subunit) (TFIIA-12) (TFIIAS) (Transcription initiation factor IIA gamma chain) (TFIIA-gamma)
<b>Immunogen</b>	Synthesized peptide derived from human protein . at AA range: 30-110
<b>Specificity</b>	T2AG Polyclonal Antibody detects endogenous levels of protein.
<b>Formulation</b>	Liquid in PBS containing 50% glycerol, and 0.02% sodium azide.
<b>Source</b>	Polyclonal, Rabbit,IgG
<b>Purification</b>	The antibody was affinity-purified from rabbit antiserum by affinity-chromatography using epitope-specific immunogen.
<b>Dilution</b>	WB 1:500-2000 ELISA 1:5000-20000
<b>Concentration</b>	1 mg/ml
<b>Purity</b>	≥90%
<b>Storage Stability</b>	-20°C/1 year
<b>Synonyms</b>	
<b>Observed Band</b>	11kD
<b>Cell Pathway</b>	Nucleus.
<b>Tissue Specificity</b>	Lung,Small intestine,
<b>Function</b>	function:TFIIA is a component of the transcription machinery of RNA polymerase II and plays an important role in transcriptional activation. TFIIA in a complex with TBP mediates transcriptional activity.,similarity:Belongs to the TFIIA subunit 2 family.,subunit:TFIIA is a heterodimer of the large unprocessed subunit 1 and a small subunit gamma. It was originally believed to be a heterotrimer of an alpha (p35), a beta (p19) and a gamma subunit (p12). Interacts with NCOA6 general coactivator (By similarity). TFIIA forms a complex with TBP. Interacts with SV40 Large T antigen.,
<b>Background</b>	Accurate transcription initiation on TATA-containing class II genes involves the ordered assembly of RNA polymerase II (POLR2A; MIM 180660) and the general

**Nanjing BYabscience technology Co.,Ltd**



initiation factors TFIIA, TFIIB (MIM 189963), TFIID (MIM 313650), TFIIE (MIM 189962), TFIIF (MIM 189968), TFIIG/TFIIJ, and TFIIH (MIM 189972). The first step involves recognition of the TATA element by the TATA-binding subunit (TBP; MIM 600075) and may be regulated by TFIIA, a factor that interacts with both TBP and a TBP-associated factor (TAF; MIM 600475) in TFIID. TFIIA has 2 subunits (43 and 12 kD) in yeast and 3 subunits in higher eukaryotes. In HeLa extracts, it consists of a 35-kD alpha subunit and a 19-kD beta subunit encoded by the N- and C-terminal regions of GTF2A1 (MIM 600520), respectively, and a 12-kD gamma subunit encoded by GTF2A2 (DeJong et al., 1995 [PubMed 7724559]).[supplied by OMIM, Mar 2008],

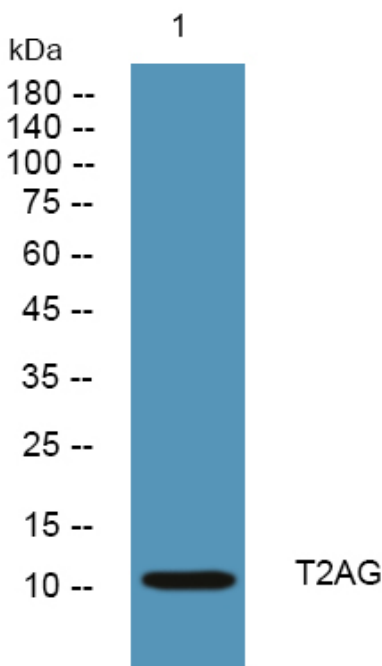
**matters needing attention**

Avoid repeated freezing and thawing!

**Usage suggestions**

This product can be used in immunological reaction related experiments. For more information, please consult technical personnel.

**Products Images**



Western blot analysis of lysates from SW480 cells, primary antibody was diluted at 1:1000, 4° over night