



MRP Polyclonal Antibody

Catalog No	BYab-04971
Isotype	IgG
Reactivity	Human;Mouse;Rat
Applications	WB;ELISA
Gene Name	MARCKSL1 MLP MRP
Protein Name	MARCKS-related protein (MARCKS-like protein 1) (Macrophage myristoylated alanine-rich C kinase substrate) (Mac-MARCKS) (MacMARCKS)
Immunogen	Synthesized peptide derived from human protein . at AA range: 1-80
Specificity	MRP Polyclonal Antibody detects endogenous levels of protein.
Formulation	Liquid in PBS containing 50% glycerol, and 0.02% sodium azide.
Source	Polyclonal, Rabbit,IgG
Purification	The antibody was affinity-purified from rabbit antiserum by affinity-chromatography using epitope-specific immunogen.
Dilution	WB 1:500-2000 ELISA 1:5000-20000
Concentration	1 mg/ml
Purity	≥90%
Storage Stability	-20°C/1 year
Synonyms	
Observed Band	21kD
Cell Pathway	Cytoplasm, cytoskeleton . Cell membrane ; Lipid-anchor . Associates with the membrane via the insertion of the N-terminal N-myristoyl chain and the partial insertion of the effector domain. Association of the effector domain with membranes may be regulated by Ca(2+)/calmodulin. Colocalizes with F-actin at the leading edge of migrating cells (By similarity). In prostate cancers, shows strong expression at apical and/or basal regions of the cell and also has weak cytoplasmic expression (PubMed:22751924) .
Tissue Specificity	Brain,Epithelium,Muscle,
Function	function:May be involved in coupling the protein kinase C and calmodulin signal transduction systems.,PTM:Phosphorylated upon DNA damage, probably by ATM or ATR.,similarity:Belongs to the MARCKS family.,
Background	MARCKS like 1(MARCKSL1) Homo sapiens This gene encodes a member of the myristoylated alanine-rich C-kinase substrate (MARCKS) family. Members of this family play a role in cytoskeletal regulation, protein kinase C signaling and

Nanjing BYabscience technology Co.,Ltd



calmodulin signaling. The encoded protein affects the formation of adherens junction. Alternative splicing results in multiple transcript variants. Pseudogenes of this gene are located on the long arm of chromosomes 6 and 10. [provided by RefSeq, Jun 2012],

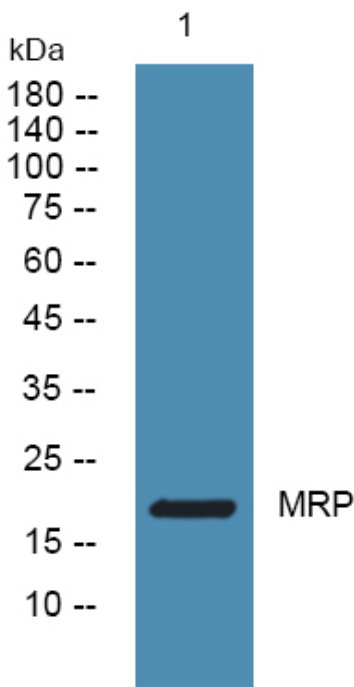
matters needing attention

Avoid repeated freezing and thawing!

Usage suggestions

This product can be used in immunological reaction related experiments. For more information, please consult technical personnel.

Products Images



Western blot analysis of lysates from SH-SY5Y cells, primary antibody was diluted at 1:1000, 4° over night