



# SAP30 Polyclonal Antibody

<b>Catalog No</b>	BYab-04960
<b>Isotype</b>	IgG
<b>Reactivity</b>	Human;Mouse
<b>Applications</b>	WB;ELISA
<b>Gene Name</b>	SAP30
<b>Protein Name</b>	Histone deacetylase complex subunit SAP30 (30 kDa Sin3-associated polypeptide) (Sin3 corepressor complex subunit SAP30) (Sin3-associated polypeptide p30)
<b>Immunogen</b>	Synthesized peptide derived from human protein . at AA range: 140-220
<b>Specificity</b>	SAP30 Polyclonal Antibody detects endogenous levels of protein.
<b>Formulation</b>	Liquid in PBS containing 50% glycerol, and 0.02% sodium azide.
<b>Source</b>	Polyclonal, Rabbit,IgG
<b>Purification</b>	The antibody was affinity-purified from rabbit antiserum by affinity-chromatography using epitope-specific immunogen.
<b>Dilution</b>	WB 1:500-2000 ELISA 1:5000-20000
<b>Concentration</b>	1 mg/ml
<b>Purity</b>	≥90%
<b>Storage Stability</b>	-20°C/1 year
<b>Synonyms</b>	
<b>Observed Band</b>	24kD
<b>Cell Pathway</b>	Nucleus.
<b>Tissue Specificity</b>	Expressed in all tissues tested with highest levels in pancreas, ovary, PBL, spleen and thymus; lowest levels in brain, placenta, lung and kidney.
<b>Function</b>	function:Involved in the functional recruitment of the Sin3-histone deacetylase complex (HDAC) to a specific subset of N-CoR corepressor complexes. Capable of transcription repression by N-CoR. Active in deacetylating core histone octamers (when in a complex) but inactive in deacetylating nucleosomal histones.,similarity:Belongs to the SAP30 family.,subunit:Interacts with SIN3A, SIN3B, HDAC2 and NCOR1 (By similarity). Component of the histone deacetylase complex that includes at least SIN3A, HDAC1 and HDAC2. Interacts with HDAC1 and HCFC1.,tissue specificity:Expressed in all tissues tested with highest levels in pancreas, ovary, PBL, spleen and thymus; lowest levels in brain, placenta, lung and kidney.,

Nanjing BYabscience technology Co.,Ltd



**Background**

Histone acetylation plays a key role in the regulation of eukaryotic gene expression. Histone acetylation and deacetylation are catalyzed by multisubunit complexes. The protein encoded by this gene is a component of the histone deacetylase complex, which includes SIN3, SAP18, HDAC1, HDAC2, RbAp46, RbAp48, and other polypeptides. This complex is active in deacetylating core histone octamers, but inactive in deacetylating nucleosomal histones. A pseudogene of this gene is located on chromosome 3. [provided by RefSeq, Jul 2008],

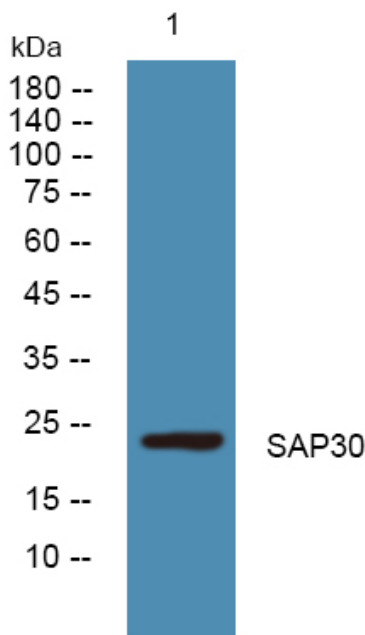
**matters needing attention**

Avoid repeated freezing and thawing!

**Usage suggestions**

This product can be used in immunological reaction related experiments. For more information, please consult technical personnel.

**Products Images**



Western blot analysis of lysates from PC12 cells, primary antibody was diluted at 1:1000, 4° over night