



ACINU Polyclonal Antibody

Catalog No	BYab-04904
Isotype	IgG
Reactivity	Human;Mouse
Applications	WB;ELISA
Gene Name	ACIN1 ACINUS KIAA0670
Protein Name	Apoptotic chromatin condensation inducer in the nucleus (Acinus)
Immunogen	Synthesized peptide derived from human protein . at AA range: 1120-1200
Specificity	ACINU Polyclonal Antibody detects endogenous levels of protein.
Formulation	Liquid in PBS containing 50% glycerol, and 0.02% sodium azide.
Source	Polyclonal, Rabbit,IgG
Purification	The antibody was affinity-purified from rabbit antiserum by affinity-chromatography using epitope-specific immunogen.
Dilution	WB 1:500-2000 ELISA 1:5000-20000
Concentration	1 mg/ml
Purity	≥90%
Storage Stability	-20°C/1 year
Synonyms	
Observed Band	147kD
Cell Pathway	Nucleus. Nucleus speckle. Nucleus, nucleoplasm. Phosphorylation on Ser-1180 by SRPK2 redistributes it from the nuclear speckles to the nucleoplasm.
Tissue Specificity	Ubiquitous. The Ser-1180 phosphorylated form (by SRPK2) is highly expressed and phosphorylated in patients with myeloid hematologic malignancies.
Function	function:Induces apoptotic chromatin condensation after activation by CASP3.,PTM:Undergoes proteolytic cleavage; the processed form is active, contrary to the uncleaved form.,similarity:Contains 1 SAP domain.,subunit:Interacts with API5.,tissue specificity:Ubiquitous.,
Background	Apoptosis is defined by several morphologic nuclear changes, including chromatin condensation and nuclear fragmentation. This gene encodes a nuclear protein that induces apoptotic chromatin condensation after activation by caspase-3, without inducing DNA fragmentation. This protein has also been shown to be a component of a splicing-dependent multiprotein exon junction complex (EJC) that is deposited at splice junctions on mRNAs, as a consequence of pre-mRNA splicing. It may thus be involved in mRNA metabolism associated

Nanjing BYabscience technology Co.,Ltd



with splicing. Alternatively spliced transcript variants encoding different isoforms have been described for this gene. [provided by RefSeq, Oct 2011],

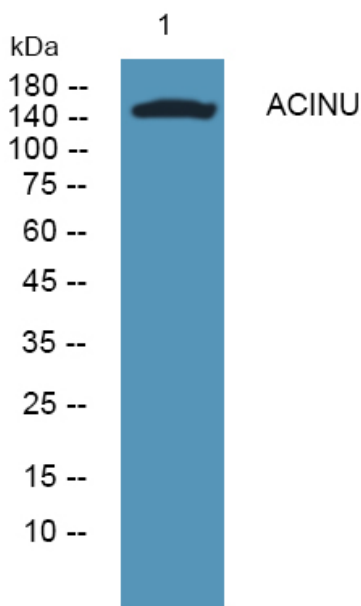
matters needing attention

Avoid repeated freezing and thawing!

Usage suggestions

This product can be used in immunological reaction related experiments. For more information, please consult technical personnel.

Products Images



Western blot analysis of lysates from SW480 cells, primary antibody was diluted at 1:1000, 4° over night