



# STK38 Polyclonal Antibody

<b>Catalog No</b>	BYab-04894
<b>Isotype</b>	IgG
<b>Reactivity</b>	Human;Mouse
<b>Applications</b>	WB;ELISA
<b>Gene Name</b>	STK38 NDR1
<b>Protein Name</b>	Serine/threonine-protein kinase 38 (EC 2.7.11.1) (NDR1 protein kinase) (Nuclear Dbf2-related kinase 1)
<b>Immunogen</b>	Synthesized peptide derived from human protein . at AA range: 390-470
<b>Specificity</b>	STK38 Polyclonal Antibody detects endogenous levels of protein.
<b>Formulation</b>	Liquid in PBS containing 50% glycerol, and 0.02% sodium azide.
<b>Source</b>	Polyclonal, Rabbit,IgG
<b>Purification</b>	The antibody was affinity-purified from rabbit antiserum by affinity-chromatography using epitope-specific immunogen.
<b>Dilution</b>	WB 1:500-2000 ELISA 1:5000-20000
<b>Concentration</b>	1 mg/ml
<b>Purity</b>	≥90%
<b>Storage Stability</b>	-20°C/1 year
<b>Synonyms</b>	
<b>Observed Band</b>	51kD
<b>Cell Pathway</b>	Nucleus. Cytoplasm.
<b>Tissue Specificity</b>	Ubiquitously expressed with highest levels observed in peripheral blood leukocytes.
<b>Function</b>	catalytic activity:ATP + a protein = ADP + a phosphoprotein.,cofactor:Magnesium.,enzyme regulation:Activated by binding of S100B which releases autoinhibitory N-lobe interactions, enabling ATP to bind and the autophosphorylation of Ser-281. Thr-444 then undergoes calcium-dependent phosphorylation by an upstream kinase. Interactions between phosphorylated Thr-444 and the N-lobe promote additional structural changes that complete the activation of the kinase. Autoinhibition is also released by the binding of MOB1/MOBKL1A and MOB2/HCCA2 to the N-terminal of STK38.,similarity:Belongs to the protein kinase superfamily. AGC Ser/Thr protein kinase family.,similarity:Contains 1 AGC-kinase C-terminal domain.,similarity:Contains 1 protein kinase domain.,subcellular location:Low

Nanjing BYabscience technology Co.,Ltd



levels present in the cytoplasm.,subunit:Homodimeric S100B binds two molecules of STK38. Interacts with MOB1 and MOB2.,ti

**Background**

This gene encodes a member of the AGC serine/threonine kinase family of proteins. The kinase activity of this protein is regulated by autophosphorylation and phosphorylation by other upstream kinases. This protein has been shown to function in the cell cycle and apoptosis. This protein has also been found to regulate the protein stability and transcriptional activity of the MYC oncogene. Alternative splicing results in multiple transcript variants. [provided by RefSeq, Feb 2015],

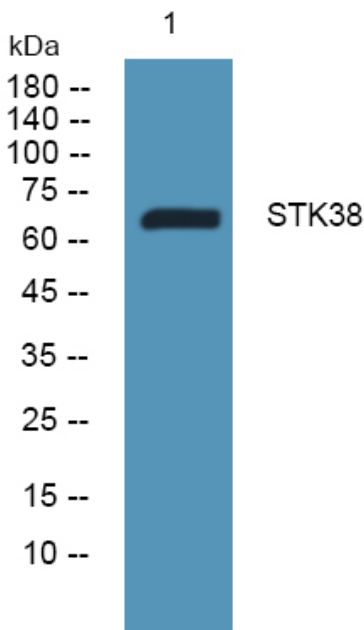
**matters needing attention**

Avoid repeated freezing and thawing!

**Usage suggestions**

This product can be used in immunological reaction related experiments. For more information, please consult technical personnel.

**Products Images**



Western blot analysis of lysates from HCT116 cells, primary antibody was diluted at 1:1000, 4° over night