



HIPK1 Polyclonal Antibody

Catalog No	BYab-04893
Isotype	IgG
Reactivity	Human;Mouse;Rat
Applications	WB;ELISA
Gene Name	HIPK1 KIAA0630 MYAK NBAK2
Protein Name	Homeodomain-interacting protein kinase 1 (EC 2.7.11.1) (Nuclear body-associated kinase 2)
Immunogen	Synthesized peptide derived from human protein . at AA range: 290-370
Specificity	HIPK1 Polyclonal Antibody detects endogenous levels of protein.
Formulation	Liquid in PBS containing 50% glycerol, and 0.02% sodium azide.
Source	Polyclonal, Rabbit,IgG
Purification	The antibody was affinity-purified from rabbit antiserum by affinity-chromatography using epitope-specific immunogen.
Dilution	WB 1:500-2000 ELISA 1:5000-20000
Concentration	1 mg/ml
Purity	≥90%
Storage Stability	-20°C/1 year
Synonyms	
Observed Band	133kD
Cell Pathway	Nucleus . Cytoplasm . Nucleus speckle . Predominantly nuclear. Translocates from nucleus to cytoplasm in response to stress stimuli via SENP1-mediated desumoylation. .
Tissue Specificity	Ubiquitously expressed with highest levels in skeletal muscle and heart. Overexpressed in breast cancer cell lines. Isoform 2 is highly expressed in testis. Expressed in both androgen-dependent and androgen-independent prostate cancer cells (PubMed:28289210).
Function	catalytic activity:ATP + a protein = ADP + a phosphoprotein.,function:May play a role as a corepressor for homeodomain transcription factors. Phosphorylates DAXX in response to stress, and mediates its translocation from the nucleus to the cytoplasm. May be involved in malignant squamous cell tumor formation.,PTM:Autophosphorylated. Phosphorylated and activated by JNK1.,similarity:Belongs to the protein kinase superfamily.,similarity:Belongs to the protein kinase superfamily. CMGC Ser/Thr protein kinase family. HIPK subfamily.,similarity:Contains 1 protein kinase domain.,subcellular

Nanjing BYabscience technology Co.,Ltd



location:Predominantly nuclear.,subunit:Interacts with Nkx1-2 and Nkx2-5 (By similarity). Interacts with DAXX and TP53.,tissue specificity:Ubiquitously expressed with highest levels in skeletal muscle and heart. Overexpressed in breast cancer cell lines.,

Background

homeodomain interacting protein kinase 1(HIPK1) Homo sapiens The protein encoded by this gene belongs to the Ser/Thr family of protein kinases and HIPK subfamily. It phosphorylates homeodomain transcription factors and may also function as a co-repressor for homeodomain transcription factors. Alternative splicing results in four transcript variants encoding four distinct isoforms. [provided by RefSeq, Jul 2008],

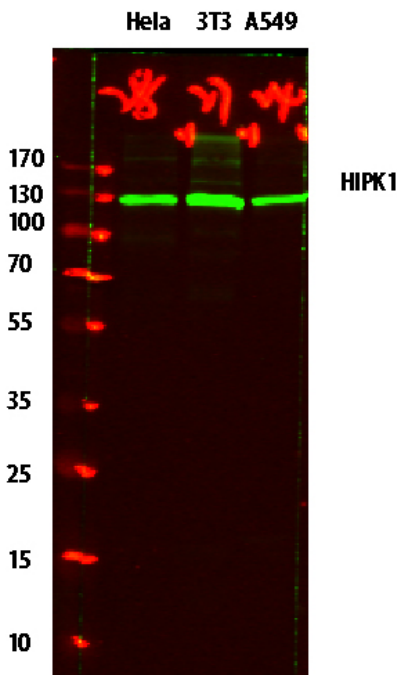
matters needing attention

Avoid repeated freezing and thawing!

Usage suggestions

This product can be used in immunological reaction related experiments. For more information, please consult technical personnel.

Products Images



Western blot analysis of various lysates, primary antibody was diluted at 1:1000, 4° over night, secondary antibody(cat: RS23920)was diluted at 1:10000, 37° 1hour.