



KIF1C Polyclonal Antibody

Catalog No	BYab-04889
Isotype	IgG
Reactivity	Human;Mouse;Rat
Applications	WB;ELISA
Gene Name	KIF1C KIAA0706
Protein Name	Kinesin-like protein KIF1C
Immunogen	Synthesized peptide derived from human protein . at AA range: 1110-1190
Specificity	KIF1C Polyclonal Antibody detects endogenous levels of protein.
Formulation	Liquid in PBS containing 50% glycerol, and 0.02% sodium azide.
Source	Polyclonal, Rabbit,IgG
Purification	The antibody was affinity-purified from rabbit antiserum by affinity-chromatography using epitope-specific immunogen.
Dilution	WB 1:500-2000 ELISA 1:5000-20000
Concentration	1 mg/ml
Purity	≥90%
Storage Stability	-20°C/1 year
Synonyms	
Observed Band	121kD
Cell Pathway	Cytoplasm, cytoskeleton .
Tissue Specificity	Expressed in all tissues examined, with most abundant expression in heart and skeletal muscle.
Function	function:Motor required for the retrograde transport of Golgi vesicles to the endoplasmic reticulum. Has a microtubule plus end-directed motility.,PTM:Phosphorylated on tyrosine residues.,similarity:Belongs to the kinesin-like protein family. Unc-104 subfamily.,similarity:Contains 1 FHA domain.,similarity:Contains 1 kinesin-motor domain.,subunit:Monomer .,tissue specificity:Expressed in all tissues examined, with most abundant expression in heart and skeletal muscle.,
Background	kinesin family member 1C(KIF1C) Homo sapiens The protein encoded by this gene is a member of the kinesin-like protein family. The family members are microtubule-dependent molecular motors that transport organelles within cells and move chromosomes during cell division. Mutations in this gene are a cause of

Nanjing BYabscience technology Co.,Ltd



spastic ataxia 2, autosomal recessive. [provided by RefSeq, May 2014],

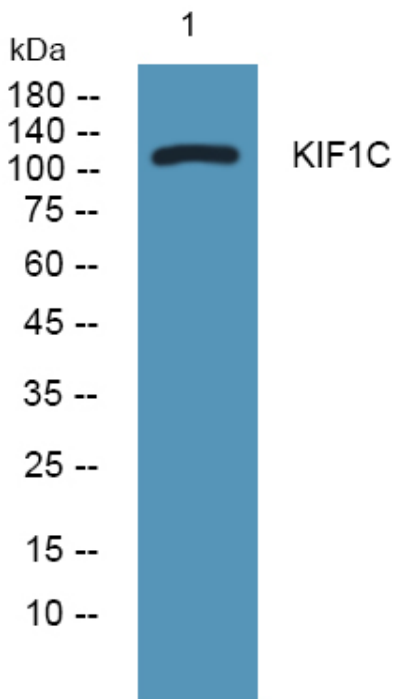
matters needing attention

Avoid repeated freezing and thawing!

Usage suggestions

This product can be used in immunological reaction related experiments. For more information, please consult technical personnel.

Products Images



Western blot analysis of lysates from PC12 cells, primary antibody was diluted at 1:1000, 4° over night