



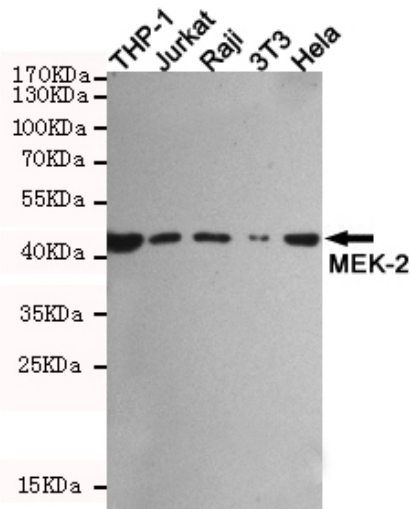
Rabbit IgG mouse mAb

Catalog No	BYab-04489
Isotype	IgG
Reactivity	Rabbit
Applications	WB;ELISA
Gene Name	rabbit igg
Protein Name	
Immunogen	Rabbit IgG
Specificity	This antibody detects rabbit IgG.
Formulation	Liquid in PBS containing 50% glycerol, 0.5% BSA and 0.02% sodium azide.
Source	Monoclonal, Mouse
Purification	The antibody was affinity-purified from mouse ascites by affinity-chromatography using epitope-specific immunogen.
Dilution	wb dilution 1:50000
Concentration	1 mg/ml
Purity	≥90%
Storage Stability	-20°C/1 year
Synonyms	Antibody; Ig gamma chain C region; Ig kappa-b4 chain C region; Ig kappa-b5 chain C region; Ig kappa-b9 chain C region; Ig lambda chain C region; K-BAS.
Observed Band	
Cell Pathway	
Tissue Specificity	
Function	
Background	
matters needing attention	Avoid repeated freezing and thawing!
Usage suggestions	This product can be used in immunological reaction related experiments. For more information, please consult technical personnel.

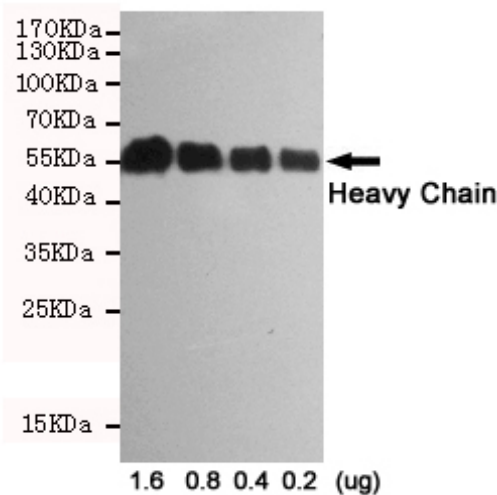
Nanjing BYabscience technology Co.,Ltd



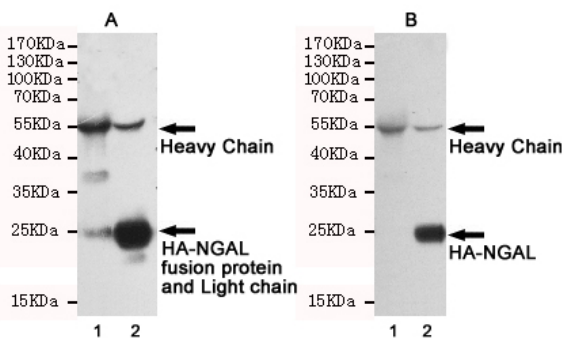
Products Images



Western blot detection of MEK-2 in THP-1, Jurkat, Raji, 3T3 and HeLa cell lysates using 310001 (MEK-2 rabbit pAb, 1:1000 diluted), then incubated with 201069 (Rabbit IgG mAb, 1:50000 diluted). Anti-mouse IgG, HRP-linked Antibody was used for detecting. Predicted band size: 44KDa. Observed band size: 44KDa.



Western blot analysis of decreasing concentrations of total rabbit IgG reduced and denatured in 2X SDS loading buffer with DTT using Mouse Anti-Rabbit IgG (Heavy-Chain Specific) mAb (1:1000 diluted).



Immunoprecipitation analysis of CHO-K1 cell lysates transfected with HA-tagged NGAL using HA-Tag Rabbit pAb (390001, 1:100 diluted) (lane 2). Lane 1 contains rabbit IgG IP control lysate. All lanes are probed with HA-Tag Rabbit pAb (390001, 1:1000 diluted) as the primary antibody. Panel A incubated with secondary antibodies Anti-Rabbit whole IgG, HRP-linked Antibody for detecting. Panel B incubated with Anti-Rabbit IgG (Heavy-Chain Specific) mAb (1:50000 diluted) and the Anti-mouse whole IgG, HRP-linked Antibody was used for detecting.

Nanjing BYabscience technology Co.,Ltd



Nanjing BYabscience technology Co.,Ltd

网址: www.njbybio.com

官方热线: 025-5229-8998

监督电话: 15950492658