



SMARCC1 mouse mAb

Catalog No	BYab-04472
Isotype	IgG
Reactivity	Human
Applications	WB
Gene Name	baf155
Protein Name	
Immunogen	Purified recombinant human SMARCC1 protein fragments expressed in E.coli.
Specificity	This antibody detects endogenous levels of SMARCC1 and does not cross-react with related proteins.
Formulation	Liquid in PBS containing 50% glycerol, 0.5% BSA and 0.02% sodium azide.
Source	Monoclonal, Mouse
Purification	The antibody was affinity-purified from mouse ascites by affinity-chromatography using epitope-specific immunogen.
Dilution	wb 1:1000
Concentration	1 mg/ml
Purity	≥90%
Storage Stability	-20°C/1 year
Synonyms	AI115498;BAF 155;BAF155;BRG 1 associated factor 155;BRG1 associated factor 155;BRG1-associated factor 155;Chromatin remodeling complex BAF155 subunit;CRACC 1;CRACC1; Mammalian chromatin remodeling complex BRG 1 associated factor 155;Mammalian chromatin remodeling complex BRG1 associated factor 155;Rsc 8;Rsc8;SMARC C1;SMARCC 1;SMARCC1; SMRC1_HUMAN;SRG 3;SRG3;SWI 3;SWI/SNF complex 155 kDa subunit;SWI/SNF related matrix associated actin dependent regulator of chromatin c1;SWI/SNF related matrix associated actin dependent regulator of chromatin subfamily c member 1;SWI/SNF-related matrix-associated actin-dependent regulator of chromatin subfamily C member 1;SWI3.
Observed Band	155kD
Cell Pathway	Nucleus . Cytoplasm .
Tissue Specificity	Expressed in brain, heart, muscle, placenta, lung, liver, muscle, kidney and pancreas.

Nanjing BYabscience technology Co.,Ltd



Function

function:Involved in transcriptional activation and repression of select genes by chromatin remodeling (alteration of DNA-nucleosome topology). May stimulate the ATPase activity of the catalytic subunit of the complex. Also involved in vitamin D-coupled transcription regulation via its association with the WINAC complex, a chromatin-remodeling complex recruited by vitamin D receptor (VDR), which is required for the ligand-bound VDR-mediated transrepression of the CYP27B1 gene.,PTM:Phosphorylated on undefined residues at the G2/M transition by ERK1 and other kinases. This may contribute to cell cycle specific inactivation of remodeling complexes containing the phosphorylated protein.,sequence caution:Contaminating sequence. Potential poly-A sequence.,similarity:Belongs to the SMARCC family.,similarity:Contains 1 SANT domain.,similarity:Contains 1 SWIRM domain.,subunit:Component of 6 multi

Background

The protein encoded by this gene is a member of the SWI/SNF family of proteins, whose members display helicase and ATPase activities and which are thought to regulate transcription of certain genes by altering the chromatin structure around those genes. The encoded protein is part of the large ATP-dependent chromatin remodeling complex SNF/SWI and contains a predicted leucine zipper motif typical of many transcription factors. [provided by RefSeq, Jul 2008],

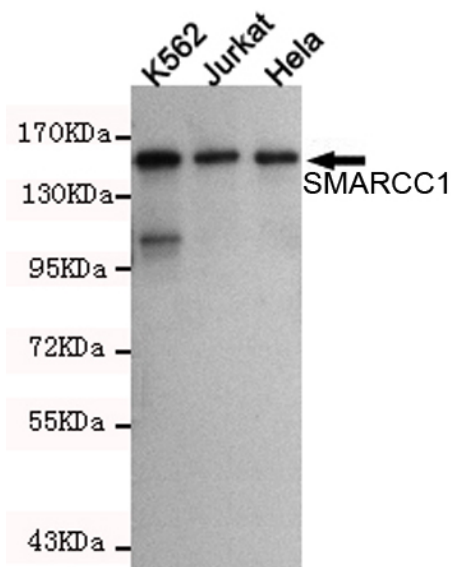
matters needing attention

Avoid repeated freezing and thawing!

Usage suggestions

This product can be used in immunological reaction related experiments. For more information, please consult technical personnel.

Products Images



Western blot detection of SMARCC1 in K562, Jurkat and HeLa cell lysates using SMARCC1 mouse mAb (1:1000 diluted). Predicted band size:155KDa. Observed band size:155KDa.

Nanjing BYabscience technology Co.,Ltd