



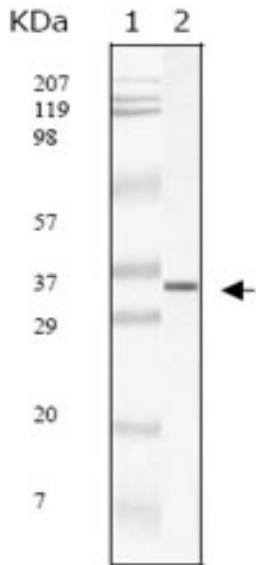
SARS-M Monoclonal Antibody

| | |
|----------------------------------|---|
| Catalog No | BYab-04458 |
| Isotype | IgG |
| Reactivity | Human virus |
| Applications | WB;ELISA |
| Gene Name | |
| Protein Name | |
| Immunogen | Purified recombinant fragment of SARS-M protein expressed in E. Coli. |
| Specificity | SARS-M Monoclonal Antibody detects SARS-M protein. |
| Formulation | Subclonal supernatant. |
| Source | Monoclonal, Mouse |
| Purification | Affinity purification |
| Dilution | Western Blot: 1/500 - 1/2000. ELISA: 1/10000. Not yet tested in other applications. |
| Concentration | 1 mg/ml |
| Purity | ≥90% |
| Storage Stability | -20°C/1 year |
| Synonyms | |
| Observed Band | |
| Cell Pathway | |
| Tissue Specificity | |
| Function | |
| Background | |
| matters needing attention | Avoid repeated freezing and thawing! |
| Usage suggestions | This product can be used in immunological reaction related experiments. For more information, please consult technical personnel. |

Nanjing BYabscience technology Co.,Ltd



Products Images



Western Blot analysis using SARS-M Monoclonal Antibody against SARS-mpm recombinant protein.