



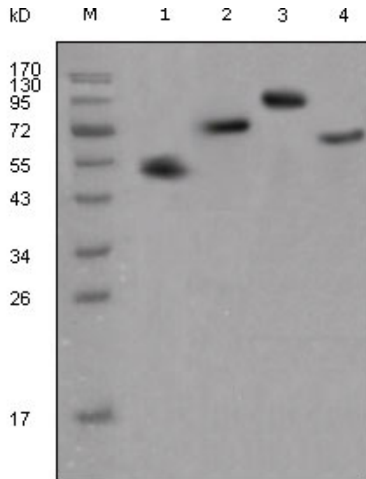
# Human IgG-Fc Monoclonal Antibody

<b>Catalog No</b>	BYab-04444
<b>Isotype</b>	IgG
<b>Reactivity</b>	Human
<b>Applications</b>	WB;IF;ELISA
<b>Gene Name</b>	
<b>Protein Name</b>	
<b>Immunogen</b>	Purified fusion protein with human IgG (Fc Specific) tag.
<b>Specificity</b>	Human IgG-Fc Monoclonal Antibody detects Human IgG-Fc protein.
<b>Formulation</b>	Ascitic fluid containing 0.03% sodium azide,0.5% BSA, 50%glycerol.
<b>Source</b>	Monoclonal, Mouse
<b>Purification</b>	Affinity purification
<b>Dilution</b>	Western Blot: 1/500 - 1/2000. Immunofluorescence: 1/200 - 1/1000. ELISA: 1/10000. Not yet tested in other applications.
<b>Concentration</b>	1 mg/ml
<b>Purity</b>	≥90%
<b>Storage Stability</b>	-20°C/1 year
<b>Synonyms</b>	
<b>Observed Band</b>	
<b>Cell Pathway</b>	
<b>Tissue Specificity</b>	
<b>Function</b>	
<b>Background</b>	
<b>matters needing attention</b>	Avoid repeated freezing and thawing!
<b>Usage suggestions</b>	This product can be used in immunological reaction related experiments. For more information, please consult technical personnel.

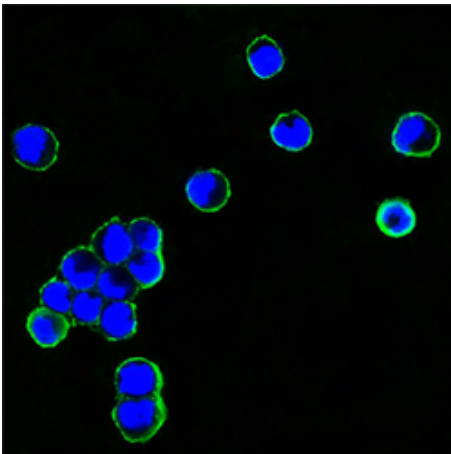
Nanjing BYabscience technology Co.,Ltd



## Products Images



Western Blot analysis using Human IgG-Fc Monoclonal Antibody against different fusion proteins with human IgG (Fc specific) tag.



Confocal immunofluorescence analysis of HEK293 cells transfected with recombinant plasmid with human IgG Fc tag using Human IgG-Fc Monoclonal Antibody (green). Blue: DRAQ5 fluorescent DNA dye.