



# ACSS1 (Acetyl-K642) Polyclonal Antibody

|                           |  |
|---------------------------|--|
| <b>Catalog No</b>         | BYab-04409   |
| <b>Isotype</b>            | IgG  |
| <b>Reactivity</b>         | Human:K642;Mouse:K635;Rat:K635   |
| <b>Applications</b>       | WB;ELISA   |
| <b>Gene Name</b>          | ACSS1 ACAS2L KIAA1846  |
| <b>Protein Name</b>       | ACSS1  |
| <b>Immunogen</b>          | Synthesized Acetyl peptide derived from human ACSS1. at AA range: K642   |
| <b>Specificity</b>        | This antibody detects endogenous levels of ACSS1 at Human:K642;Mouse:K635;Rat:K635, It doesn't react with total protein.   |
| <b>Formulation</b>        | Liquid in PBS containing 50% glycerol, 0.5% BSA and 0.02% sodium azide.  |
| <b>Source</b>             | Polyclonal, Rabbit,IgG   |
| <b>Purification</b>       | The antibody was affinity-purified from rabbit antiserum by affinity-chromatography using epitope-specific immunogen.  |
| <b>Dilution</b>           | Western Blot: 1/500 - 1/2000. ELISA: 1/20000. Not yet tested in other applications.  |
| <b>Concentration</b>      | 1 mg/ml  |
| <b>Purity</b>             | ≥90%   |
| <b>Storage Stability</b>  | -20°C/1 year   |
| <b>Synonyms</b>           | Acetyl-coenzyme A synthetase 2-like, mitochondrial (EC 6.2.1.1) (Acetate--CoA ligase 2) (Acetyl-CoA synthetase 2) (AceCS2) (Acyl-CoA synthetase short-chain family member 1)   |
| <b>Observed Band</b>      |  |
| <b>Cell Pathway</b>       | Mitochondrion matrix .   |
| <b>Tissue Specificity</b> | Amygdala,Brain,PCR rescued clones,Placenta,Spleen,Stomach,T  |
| <b>Function</b>           | catalytic activity:ATP + acetate + CoA = AMP + diphosphate + acetyl-CoA.,function:Converts acetate to acetyl-CoA so that it can be used for oxidation through the tricarboxylic cycle to produce ATP and CO(2).,sequence caution:Sequencing errors.,similarity:Belongs to the ATP-dependent AMP-binding enzyme family.,      |
| <b>Background</b>         | This gene encodes a mitochondrial acetyl-CoA synthetase enzyme. A similar protein in mice plays an important role in the tricarboxylic acid cycle by catalyzing the conversion of acetate to acetyl CoA. Alternatively spliced transcript variants encoding multiple isoforms have been observed for this gene. [provided by |

**Nanjing BYabscience technology Co.,Ltd**



RefSeq, Nov 2011],

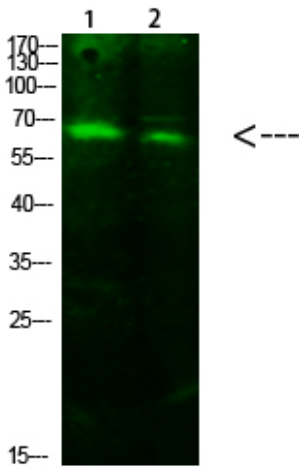
**matters needing attention**

Avoid repeated freezing and thawing!

**Usage suggestions**

This product can be used in immunological reaction related experiments. For more information, please consult technical personnel.

## Products Images



Western Blot analysis of 1,293T 2,hela cells using primary antibody diluted at 1:1000(4°C overnight). Secondary antibody:Goat Anti-rabbit IgG IRDye 800(diluted at 1:5000, 25°C, 1 hour)

Nanjing BYabscience technology Co.,Ltd