



# GATA-2/3 (Acetyl Lys336/304) Polyclonal Antibody

<b>Catalog No</b>	BYab-04408
<b>Isotype</b>	IgG
<b>Reactivity</b>	Human:K336/304;Mouse:K336/304;Rat:K336/305
<b>Applications</b>	WB;ELISA
<b>Gene Name</b>	GATA2/GATA3
<b>Protein Name</b>	GATA binding protein 2/GATA binding protein 3
<b>Immunogen</b>	Synthesized acetyl-peptide from human protein at AA range: 320-390
<b>Specificity</b>	This antibody detects endogenous levels of GATA-2/3 at Human:K336/304;Mouse:K336/304;Rat:K336/305, It doesn't react with total protein.
<b>Formulation</b>	PBS, pH 7.4, containing 0.02% sodium azide as Preservative and 50% Glycerol.
<b>Source</b>	Polyclonal, Rabbit,IgG
<b>Purification</b>	The antibody was affinity-purified from rabbit serum by affinity-chromatography using specific immunogen.
<b>Dilution</b>	WB: 1:500-10000 ELISA: 1:10000
<b>Concentration</b>	1 mg/ml
<b>Purity</b>	≥90%
<b>Storage Stability</b>	-20°C/1 year
<b>Synonyms</b>	GATA2
<b>Observed Band</b>	50kD
<b>Cell Pathway</b>	Nucleus.
<b>Tissue Specificity</b>	Endothelial cells.
<b>Function</b>	function:Transcriptional activator which regulates endothelin-1 gene expression in endothelial cells. Binds to the consensus sequence 5'-AGATAG-3',sequence caution:Several sequencing errors.,similarity:Contains 2 GATA-type zinc fingers.,tissue specificity:Endothelial cells.,
<b>Background</b>	This gene encodes a member of the GATA family of zinc-finger transcription factors that are named for the consensus nucleotide sequence they bind in the promoter regions of target genes. The encoded protein plays an essential role in regulating transcription of genes involved in the development and proliferation of hematopoietic and endocrine cell lineages. Alternative splicing results in multiple transcript variants.[provided by RefSeq, Mar 2009],

Nanjing BYabscience technology Co.,Ltd



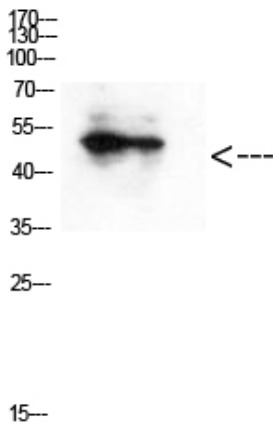
**matters needing attention**

Avoid repeated freezing and thawing!

**Usage suggestions**

This product can be used in immunological reaction related experiments. For more information, please consult technical personnel.

## Products Images



Western Blot analysis of hepg2 cells using Antibody diluted at 500. Secondary antibody(catalog#:RS0002) was diluted at 1:20000