



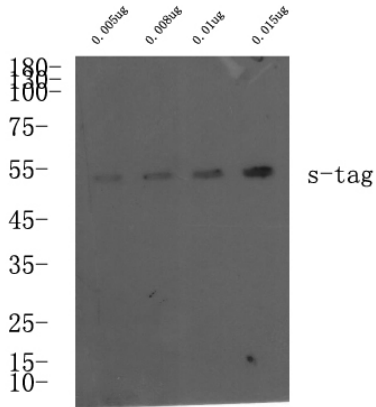
# S-Tag Polyclonal Antibody

<b>Catalog No</b>	BYab-04404
<b>Isotype</b>	IgG
<b>Reactivity</b>	Species independent
<b>Applications</b>	WB; ELISA
<b>Gene Name</b>	S Tag
<b>Protein Name</b>	S Tag
<b>Immunogen</b>	Synthetic peptide within S tag.
<b>Specificity</b>	Rabbit polyclonal to S tag
<b>Formulation</b>	Liquid in PBS containing 50% glycerol, and 0.02% sodium azide.
<b>Source</b>	Polyclonal, Rabbit,IgG
<b>Purification</b>	The antibody was affinity-purified from mouse ascites by affinity-chromatography using specific immunogen.
<b>Dilution</b>	WB 1:1000-5000, ELISA(peptide)1:5000-20000
<b>Concentration</b>	1 mg/ml
<b>Purity</b>	≥90%
<b>Storage Stability</b>	-20°C/1 year
<b>Synonyms</b>	KETAAAKFERQHMS tag antibody antibody S peptide antibody S peptide epitope tag antibody
<b>Observed Band</b>	
<b>Cell Pathway</b>	
<b>Tissue Specificity</b>	
<b>Function</b>	
<b>Background</b>	
<b>matters needing attention</b>	Avoid repeated freezing and thawing!
<b>Usage suggestions</b>	This product can be used in immunological reaction related experiments. For more information, please consult technical personnel.

**Nanjing BYabscience technology Co.,Ltd**



## Products Images



Western blot analysis of S-Tag fusion protein at 0.05-0.15ug, 4° over night, secondary antibody(cat: RS0002) was diluted at 1:10000, 37° 1hour.