



Kallikrein-7 (Cleaved-Ile30) rabbit pAb

Catalog No	BYab-04390
Isotype	IgG
Reactivity	Human;Mouse;Rat
Applications	WB;IHC
Gene Name	KLK7 PRSS6 SCCE
Protein Name	Kallikrein-7 (Cleaved-Ile30)
Immunogen	Synthesized peptide derived from human Kallikrein-7 (Cleaved-Ile30)
Specificity	This antibody detects endogenous levels of Human,Mouse,Rat Kallikrein-7 (Cleaved-Ile30, protein was cleaved amino acid sequence between 29-30)
Formulation	Liquid in PBS containing 50% glycerol, 0.5% BSA and 0.02% sodium azide.
Source	Polyclonal, Rabbit,IgG
Purification	The antibody was affinity-purified from rabbit serum by affinity-chromatography using specific immunogen.
Dilution	WB 1:500-2000;IHC-p 1:50-300
Concentration	1 mg/ml
Purity	≥90%
Storage Stability	-20°C/1 year
Synonyms	Kallikrein-7 (hK7;EC 3.4.21.117;Serine protease 6;Stratum corneum chymotryptic enzyme;hSCCE)
Observed Band	25kD
Cell Pathway	Secreted . In ovarian carcinoma, secreted and also observed at the apical membrane and in cytoplasm at the invasive front.
Tissue Specificity	Abundantly expressed in the skin and is expressed by keratinocytes in the epidermis. Also expressed in the brain, mammary gland, cerebellum, spinal cord and kidney. Lower levels in salivary glands, uterus, thymus, thyroid, placenta, trachea and testis. Up-regulated in ovarian carcinoma, especially late-stage serous carcinoma, compared with normal ovaries and benign adenomas (at protein level).
Function	
Background	

Nanjing BYabscience technology Co.,Ltd



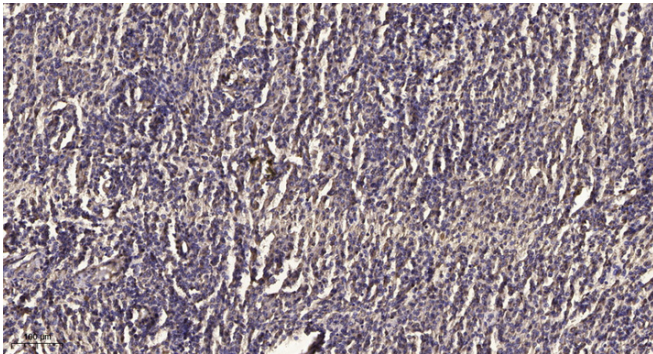
matters needing attention

Avoid repeated freezing and thawing!

Usage suggestions

This product can be used in immunological reaction related experiments. For more information, please consult technical personnel.

Products Images



Immunohistochemical analysis of paraffin-embedded human meningioma. 1, Antibody was diluted at 1:200(4 ° overnight). 2, Tris-EDTA,pH9.0 was used for antigen retrieval. 3,Secondary antibody was diluted at 1:200(room temperature, 45min).