



ITIH3 (Cleaved-Asp651) rabbit pAb

Catalog No	BYab-04385
Isotype	IgG
Reactivity	Human;Mouse;Rat
Applications	WB;ELISA;IHC
Gene Name	ITIH3
Protein Name	ITIH3 (Cleaved-Asp651)
Immunogen	Synthesized peptide derived from human ITIH3 (Cleaved-Asp651)
Specificity	This antibody detects endogenous levels of Human,Mouse,Rat ITIH3 (Cleaved-Asp651, protein was cleaved amino acid sequence between 651-652)
Formulation	Liquid in PBS containing 50% glycerol, 0.5% BSA and 0.02% sodium azide.
Source	Polyclonal, Rabbit,IgG
Purification	The antibody was affinity-purified from rabbit serum by affinity-chromatography using specific immunogen.
Dilution	WB 1:500-2000;IHC-p 1:50-300; ELISA 2000-20000
Concentration	1 mg/ml
Purity	≥90%
Storage Stability	-20°C/1 year
Synonyms	Inter-alpha-trypsin inhibitor heavy chain H3 (ITI heavy chain H3;ITI-HC3;Inter-alpha-inhibitor heavy chain 3;Serum-derived hyaluronan-associated protein;SHAP)
Observed Band	68 95kD
Cell Pathway	Secreted.
Tissue Specificity	
Function	
Background	
matters needing attention	Avoid repeated freezing and thawing!

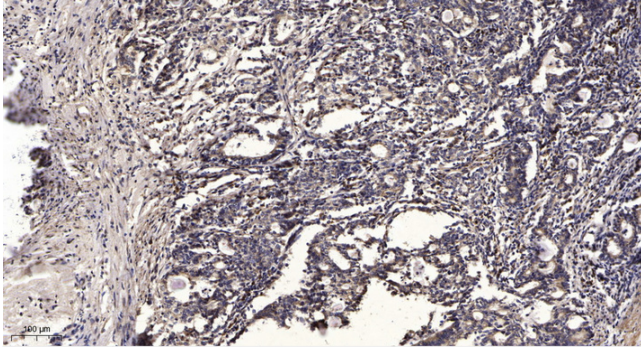
Nanjing BYabscience technology Co.,Ltd



Usage suggestions

This product can be used in immunological reaction related experiments. For more information, please consult technical personnel.

Products Images



Immunohistochemical analysis of paraffin-embedded human Gastric adenocarcinoma. 1, Antibody was diluted at 1:200(4° overnight). 2, Tris-EDTA,pH9.0 was used for antigen retrieval. 3,Secondary antibody was diluted at 1:200(room temperature, 45min).