



Cystatin A Polyclonal Antibody

Catalog No	BYab-04353
Isotype	IgG
Reactivity	Human;Rat;Mouse;
Applications	WB;IHC;IF;ELISA
Gene Name	CSTA STF1 STFA
Protein Name	Cystatin-A (Cystatin-AS) (Stefin-A)
Immunogen	Synthetic peptide from human protein at AA range: 60-98
Specificity	The antibody detects endogenous Cystatin A
Formulation	Liquid in PBS containing 50% glycerol, 0.5% BSA and 0.02% sodium azide.
Source	Polyclonal, Rabbit,IgG
Purification	The antibody was affinity-purified from rabbit antiserum by affinity-chromatography using epitope-specific immunogen.
Dilution	WB 1:500-2000,IHC-p 1:500-200, ELISA 1:10000-20000. IF 1:50-200
Concentration	1 mg/ml
Purity	≥90%
Storage Stability	-20°C/1 year
Synonyms	Cystatin-A (Cystatin-AS;Stefin-A)
Observed Band	11kD
Cell Pathway	Cytoplasm .
Tissue Specificity	Expressed in the skin throughout the epidermis.
Function	function:This is an intracellular thiol proteinase inhibitor.,similarity:Belongs to the cystatin family.,
Background	The cystatin superfamily encompasses proteins that contain multiple cystatin-like sequences. Some of the members are active cysteine protease inhibitors, while others have lost or perhaps never acquired this inhibitory activity. There are three inhibitory families in the superfamily, including the type 1 cystatins (stefins), type 2 cystatins, and kininogens. This gene encodes a stefin that functions as a cysteine protease inhibitor, forming tight complexes with papain and the cathepsins B, H, and L. The protein is one of the precursor proteins of cornified cell envelope in keratinocytes and plays a role in epidermal development and maintenance. Stefins have been proposed as prognostic and diagnostic tools for cancer.

Nanjing BYabscience technology Co.,Ltd



[provided by RefSeq, Jul 2008],

matters needing attention

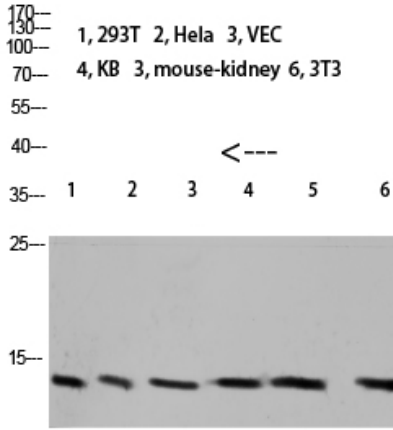
Avoid repeated freezing and thawing!

Usage suggestions

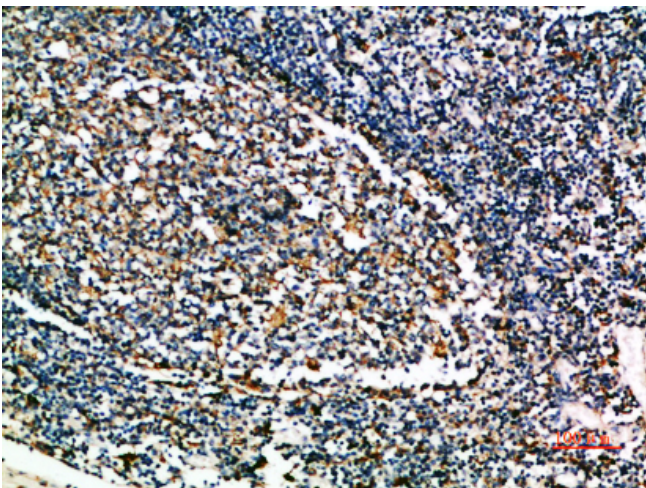
This product can be used in immunological reaction related experiments. For more information, please consult technical personnel.



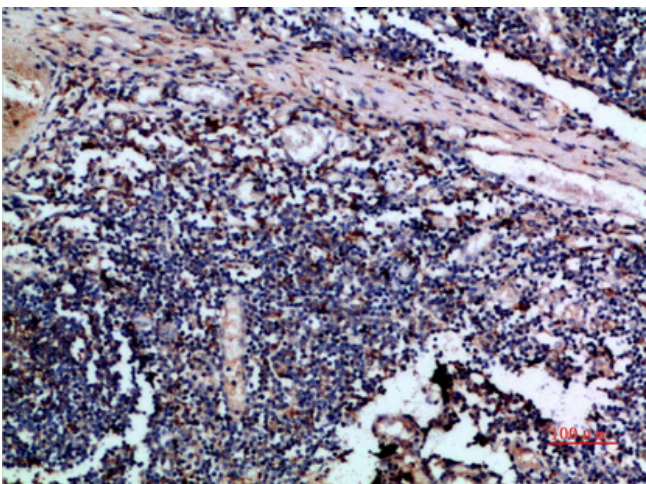
Products Images



Western blot analysis of 293T mouse-kidney lysate, antibody was diluted at 1000. Secondary antibody(catalog#:RS0002) was diluted at 1:20000

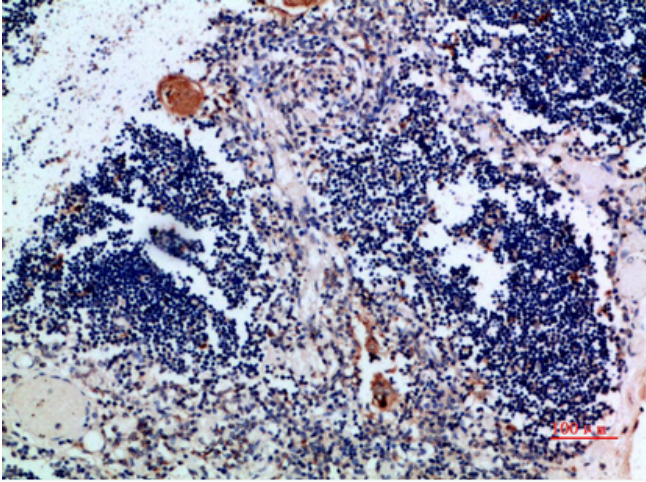


Immunohistochemical analysis of paraffin-embedded human-tonsil, antibody was diluted at 1:200



Immunohistochemical analysis of paraffin-embedded human-tonsil, antibody was diluted at 1:200

Nanjing BYabscience technology Co.,Ltd



Immunohistochemical analysis of paraffin-embedded human-thymus, antibody was diluted at 1:200