



# MIA2 Polyclonal Antibody

<b>Catalog No</b>	BYab-04350
<b>Isotype</b>	IgG
<b>Reactivity</b>	Human;Rat;Mouse;
<b>Applications</b>	WB;IHC
<b>Gene Name</b>	MIA2
<b>Protein Name</b>	MIA2
<b>Immunogen</b>	Synthesized peptide derived from MIA2 at AA range: 361-410
<b>Specificity</b>	MIA2 Polyclonal Antibody detects endogenous levels of MIA2
<b>Formulation</b>	Liquid in PBS containing 50% glycerol, 0.5% BSA and 0.02% sodium azide.
<b>Source</b>	Polyclonal, Rabbit,IgG
<b>Purification</b>	The antibody was affinity-purified from rabbit antiserum by affinity-chromatography using epitope-specific immunogen.
<b>Dilution</b>	WB 1:500-2000;IHC-p 1:50-300
<b>Concentration</b>	1 mg/ml
<b>Purity</b>	≥90%
<b>Storage Stability</b>	-20°C/1 year
<b>Synonyms</b>	Melanoma inhibitory activity protein 2
<b>Observed Band</b>	65kD
<b>Cell Pathway</b>	Endoplasmic reticulum membrane ; Single-pass membrane protein . Localizes to endoplasmic reticulum exit sites (ERES), also known as transitional endoplasmic reticulum (tER). .
<b>Tissue Specificity</b>	Highly expressed in liver and weakly in testis. Expression was higher in patients with severe fibrosis or inflammation and chronic hepatitis (PubMed:12586826). Isoform 1 is specifically expressed in lung, testis, small intestine, colon, pancreas, kidney, liver and prostate (PubMed:27138255). Isoform 8 is expressed only in testis (at the protein level). Isoform 8 (at protein level) and isoform 9 are expressed in cutaneous T-cell lymphoma (CTCL) cell lines, colorectal carcinomas, breast carcinomas and melanoma. Isoform 9, but not isoform 5A, is expressed in head and neck squamous cell carcinoma (PubMed:12839582).
<b>Function</b>	disease:Autoantigen found several cancer types, including benign meningioma and cutaneous T-cell lymphoma (CTCL). Isoform 5A and isoform 5B are recognized by patients' sera with tumor specimen of various origins.,disease:Tumor-associated antigen found in several cutaneous T-cell

Nanjing BYabscience technology Co.,Ltd



lymphoma (CTCL). Also found in colorectal and breast carcinomas, head and neck squamous cell carcinomas and melanoma. ,function:Tumor-associated antigen. ,sequence caution:Translation N-terminally extended. ,similarity:Belongs to the cTAGE family. ,tissue specificity:At the protein level, isoform 5A is expressed only in testis. Other isoforms are expressed in several other normal tissues, including brain, muscle and cranial skin. Isoform 5A (at the protein level) and isoform 5B are expressed in cutaneous T-cell lymphoma (CTCL) cell lines, colorectal carcinomas, breast carcinomas and melanoma. Isoform 5B, but not isof

#### Background

This gene encodes s receptor in the endoplasmic reticulum, which plays a role in the export of large pre-chylomicrons and pre-very low density lipoproteins (pre-VLDLs). Three major classes of transcripts are generated from this gene-melanoma inhibitory activity 2-specific transcripts, cTAGE family member 5-specific transcripts and transcripts that include exons from both these transcript species (TANGO1-like or TALI). Additionally, alternative splicing in these transcripts results in multiple transcript variants encoding multiple isoforms. [provided by RefSeq, Sep 2016],

#### matters needing attention

Avoid repeated freezing and thawing!

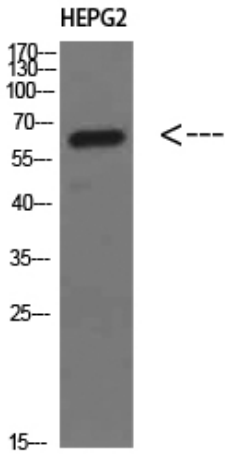
#### Usage suggestions

This product can be used in immunological reaction related experiments. For more information, please consult technical personnel.

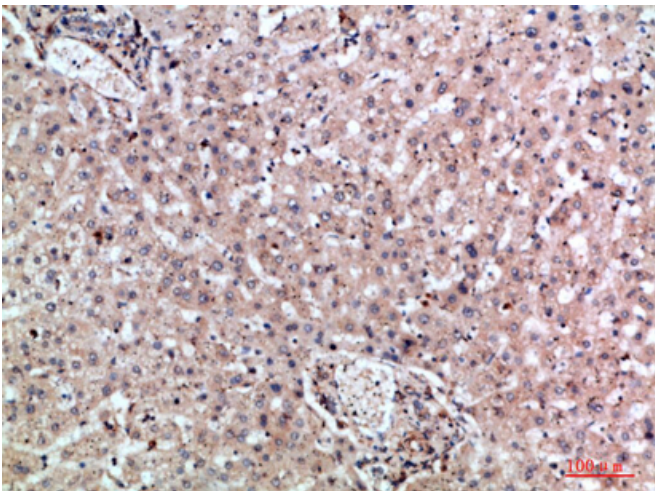
Nanjing BYabscience technology Co.,Ltd



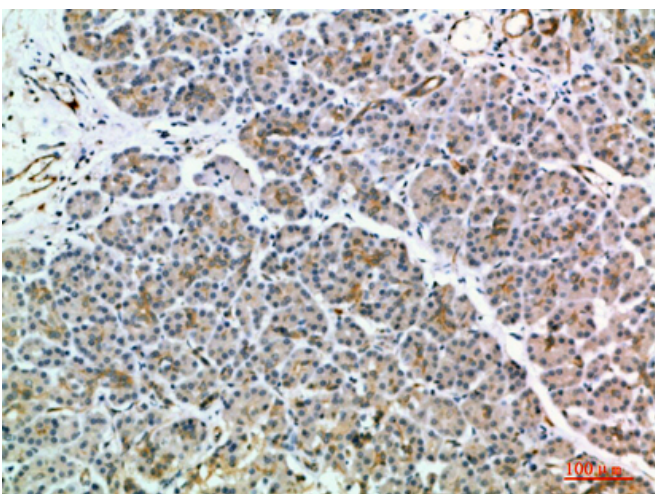
## Products Images



Western Blot analysis of HEPG2 cells using MIA2 Polyclonal Antibody diluted at 1:500. Secondary antibody(catalog#:RS0002) was diluted at 1:20000

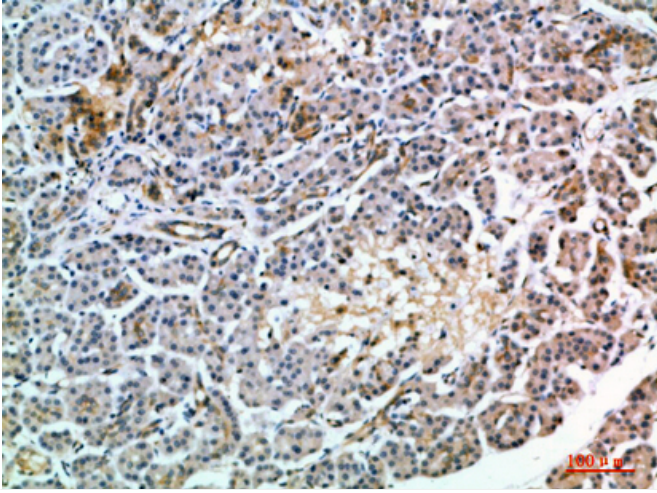


Immunohistochemical analysis of paraffin-embedded human-liver, antibody was diluted at 1:200

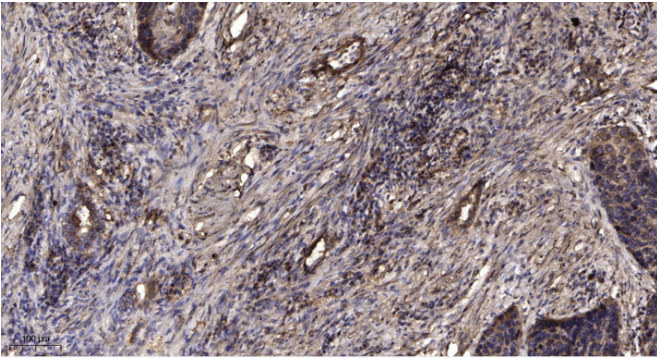


Immunohistochemical analysis of paraffin-embedded human-pancreas, antibody was diluted at 1:200

Nanjing BYabscience technology Co.,Ltd



Immunohistochemical analysis of paraffin-embedded human-pancreas, antibody was diluted at 1:200



Immunohistochemical analysis of paraffin-embedded human Squamous cell carcinoma of lung. 1, Antibody was diluted at 1:200(4° overnight). 2, Tris-EDTA,pH9.0 was used for antigen retrieval. 3,Secondary antibody was diluted at 1:200(room temperature, 45min).