



Mob3A/B Polyclonal Antibody

Catalog No	BYab-04345
Isotype	IgG
Reactivity	Human;Mouse
Applications	WB;IHC;IF;ELISA
Gene Name	MMOBKL2A/MMOBKL2B
Protein Name	Mps one binder kinase activator-like 2A/B
Immunogen	Synthesized peptide derived from Mob3A/B . at AA range: 1-80
Specificity	Mob3A/B Polyclonal Antibody detects endogenous levels of Mob3A/B protein.
Formulation	Liquid in PBS containing 50% glycerol, 0.5% BSA and 0.02% sodium azide.
Source	Polyclonal, Rabbit,IgG
Purification	The antibody was affinity-purified from rabbit antiserum by affinity-chromatography using epitope-specific immunogen.
Dilution	WB: 1/500 - 1/2000. IHC-p: 1:100-1:300. ELISA: 1/10000.. IF 1:50-200
Concentration	1 mg/ml
Purity	≥90%
Storage Stability	-20°C/1 year
Synonyms	MOB3A; MOBKL2A; MOB kinase activator 3A; MOB-LAK; Mob1 homolog 2A; Mps one binder kinase activator-like 2A; MOB3B; MOBKL2B; MOB kinase activator 3B; Mob1 homolog 2b; Mps one binder kinase activator-like 2B
Observed Band	25kD
Cell Pathway	intracellular,
Tissue Specificity	Cervix,Skin,
Function	function:May regulate the activity of kinases.,sequence caution:Chimera. There is an inclusion of DNA from another gene in position 141.,similarity:Belongs to the MOB1/phocein family.,
Background	function:May regulate the activity of kinases.,sequence caution:Chimera. There is an inclusion of DNA from another gene in position 141.,similarity:Belongs to the MOB1/phocein family.,
matters needing attention	Avoid repeated freezing and thawing!

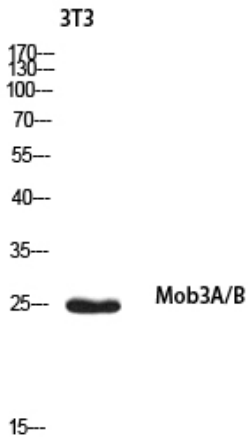
Nanjing BYabscience technology Co.,Ltd



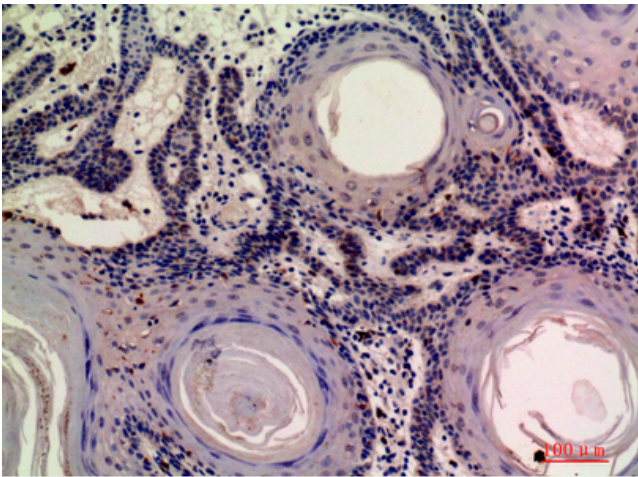
Usage suggestions

This product can be used in immunological reaction related experiments. For more information, please consult technical personnel.

Products Images



Western blot analysis of 3T3 using Mob3A/B antibody. Secondary antibody(catalog#:RS0002) was diluted at 1:20000



Immunohistochemical analysis of paraffin-embedded human-skin, antibody was diluted at 1:200