



SPARC Polyclonal Antibody

Catalog No	BYab-04342
Isotype	IgG
Reactivity	Human;Mouse;Rat
Applications	WB;IHC;IF;ELISA
Gene Name	SPARC
Protein Name	SPARC
Immunogen	The antiserum was produced against synthesized peptide derived from the Internal region of human SPARC. AA range:141-190
Specificity	SPARC Polyclonal Antibody detects endogenous levels of SPARC protein.
Formulation	Liquid in PBS containing 50% glycerol, 0.5% BSA and 0.02% sodium azide.
Source	Polyclonal, Rabbit,IgG
Purification	The antibody was affinity-purified from rabbit antiserum by affinity-chromatography using epitope-specific immunogen.
Dilution	WB: 1/500 - 1/2000. IHC-p: 1:100-1:300. ELISA: 1/20000.. IF 1:50-200
Concentration	1 mg/ml
Purity	≥90%
Storage Stability	-20°C/1 year
Synonyms	SPARC; ON; SPARC; Basement-membrane protein 40; BM-40; Osteonectin; ON; Secreted protein acidic and rich in cysteine
Observed Band	34kD
Cell Pathway	Secreted, extracellular space, extracellular matrix, basement membrane . In or around the basement membrane.
Tissue Specificity	Muscle,Placenta,PNS,Prostate,Skin,
Function	developmental stage:Expressed at high levels in tissues undergoing morphogenesis, remodeling and wound repair.,function:Appears to regulate cell growth through interactions with the extracellular matrix and cytokines. Binds calcium and copper, several types of collagen, albumin, thrombospondin, PDGF and cell membranes. There are two calcium binding sites; an acidic domain that binds 5 to 8 Ca(2+) with a low affinity and an EF-hand loop that binds a Ca(2+) ion with a high affinity.,online information:Osteonectin entry,similarity:Belongs to the SPARC family.,similarity:Contains 1 EF-hand domain.,similarity:Contains 1 follistatin-like domain.,similarity:Contains 1 Kazal-like domain.,subcellular location:In or around the basement membrane.,

Nanjing BYabscience technology Co.,Ltd



Background

This gene encodes a cysteine-rich acidic matrix-associated protein. The encoded protein is required for the collagen in bone to become calcified but is also involved in extracellular matrix synthesis and promotion of changes to cell shape. The gene product has been associated with tumor suppression but has also been correlated with metastasis based on changes to cell shape which can promote tumor cell invasion. Three transcript variants encoding different isoforms have been found for this gene. [provided by RefSeq, Jun 2015],

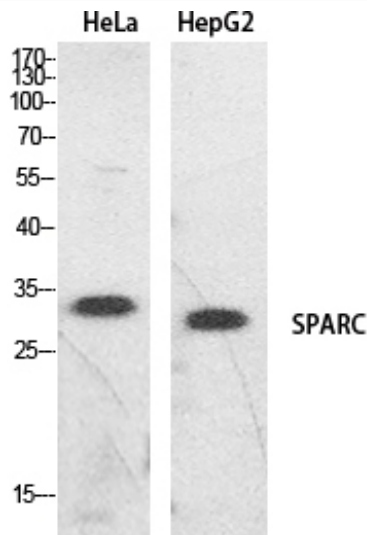
matters needing attention

Avoid repeated freezing and thawing!

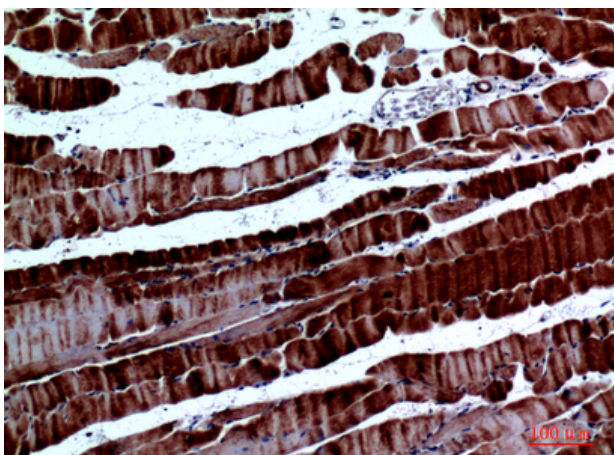
Usage suggestions

This product can be used in immunological reaction related experiments. For more information, please consult technical personnel.

Products Images



Western Blot analysis of HeLa, HepG2 cells using SPARC Polyclonal Antibody. Secondary antibody(catalog#:RS0002) was diluted at 1:20000



Immunohistochemical analysis of paraffin-embedded mouse-muscle, antibody was diluted at 1:100

Nanjing BYabscience technology Co.,Ltd