



# CyPB Polyclonal Antibody

<b>Catalog No</b>	BYab-04338
<b>Isotype</b>	IgG
<b>Reactivity</b>	Human;Mouse;Rat
<b>Applications</b>	WB;ELISA
<b>Gene Name</b>	PPIB
<b>Protein Name</b>	Peptidyl-prolyl cis-trans isomerase B
<b>Immunogen</b>	The antiserum was produced against synthesized peptide derived from the C-terminal region of human PPIB. AA range:151-200
<b>Specificity</b>	CyPB Polyclonal Antibody detects endogenous levels of CyPB protein.
<b>Formulation</b>	Liquid in PBS containing 50% glycerol, 0.5% BSA and 0.02% sodium azide.
<b>Source</b>	Polyclonal, Rabbit,IgG
<b>Purification</b>	The antibody was affinity-purified from rabbit antiserum by affinity-chromatography using epitope-specific immunogen.
<b>Dilution</b>	Western Blot: 1/500 - 1/2000. ELISA: 1/20000. Not yet tested in other applications.
<b>Concentration</b>	1 mg/ml
<b>Purity</b>	≥90%
<b>Storage Stability</b>	-20°C/1 year
<b>Synonyms</b>	PPIB; CYPB; Peptidyl-prolyl cis-trans isomerase B; PPIase B; CYP-S1; Cyclophilin B; Rotamase B; S-cyclophilin; SCYLP
<b>Observed Band</b>	24kD
<b>Cell Pathway</b>	Virion . (Microbial infection).; Endoplasmic reticulum lumen . Melanosome . Identified by mass spectrometry in melanosome fractions from stage I to stage IV (PubMed:17081065). .
<b>Tissue Specificity</b>	Brain,Fetal brain cortex,Prostate,Skin,
<b>Function</b>	catalytic activity:Peptidylproline (omega=180) = peptidylproline (omega=0).,caution:It is uncertain whether Met-1 or Met-9 is the initiator.,enzyme regulation:Cyclosporin A (CsA) inhibits CYPB.,function:PPIases accelerate the folding of proteins. It catalyzes the cis-trans isomerization of proline imidic peptide bonds in oligopeptides.,similarity:Belongs to the cyclophilin-type PPIase family. PPIase B subfamily.,similarity:Contains 1 PPIase cyclophilin-type domain.,subcellular location:Identified by mass spectrometry in melanosome fractions from stage I to stage IV.,

Nanjing BYabscience technology Co.,Ltd



**Background**

The protein encoded by this gene is a cyclosporine-binding protein and is mainly located within the endoplasmic reticulum. It is associated with the secretory pathway and released in biological fluids. This protein can bind to cells derived from T- and B-lymphocytes, and may regulate cyclosporine A-mediated immunosuppression. Variants have been identified in this protein that give rise to recessive forms of osteogenesis imperfecta. [provided by RefSeq, Oct 2009],

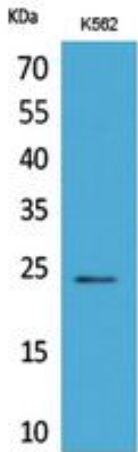
**matters needing attention**

Avoid repeated freezing and thawing!

**Usage suggestions**

This product can be used in immunological reaction related experiments. For more information, please consult technical personnel.

**Products Images**



Western Blot analysis of K562 cells using CyPB Polyclonal Antibody. Secondary antibody(catalog#:RS0002) was diluted at 1:20000