



# HPA1 Polyclonal Antibody

<b>Catalog No</b>	BYab-04330
<b>Isotype</b>	IgG
<b>Reactivity</b>	Human;Rat;Mouse;
<b>Applications</b>	WB;IHC;IF;ELISA
<b>Gene Name</b>	HPSE
<b>Protein Name</b>	Heparanase
<b>Immunogen</b>	The antiserum was produced against synthesized peptide derived from the Internal region of human HPSE. AA range:241-290
<b>Specificity</b>	HPA1 Polyclonal Antibody detects endogenous levels of HPA1 protein.
<b>Formulation</b>	Liquid in PBS containing 50% glycerol, 0.5% BSA and 0.02% sodium azide.
<b>Source</b>	Polyclonal, Rabbit,IgG
<b>Purification</b>	The antibody was affinity-purified from rabbit antiserum by affinity-chromatography using epitope-specific immunogen.
<b>Dilution</b>	WB: 1/500 - 1/2000. IHC-p: 1/100-1/300. ELISA: 1/20000.. IF 1:50-200
<b>Concentration</b>	1 mg/ml
<b>Purity</b>	≥90%
<b>Storage Stability</b>	-20°C/1 year
<b>Synonyms</b>	HPSE; HEP; HPA; HPA1; HPR1; HPSE1; HSE1; Heparanase; Endo-glucuronidase; Heparanase-1; Hpa1
<b>Observed Band</b>	62kD
<b>Cell Pathway</b>	Lysosome membrane; Peripheral membrane protein. Secreted. Nucleus. Proheparanase is secreted via vesicles of the Golgi. Interacts with cell membrane heparan sulfate proteoglycans (HSPGs). Endocytosed and accumulates in endosomes. Transferred to lysosomes where it is proteolytically cleaved to produce the active enzyme. Under certain stimuli, transferred to the cell surface. Associates with lipid rafts. Colocalizes with SDC1 in endosomal/lysosomal vesicles. Accumulates in perinuclear lysosomal vesicles. Heparin retains proheparanase in the extracellular medium (By similarity).
<b>Tissue Specificity</b>	Highly expressed in placenta and spleen and weakly expressed in lymph node, thymus, peripheral blood leukocytes, bone marrow, endothelial cells, fetal liver and tumor tissues. Also expressed in hair follicles, specifically in both Henle's and Huxley's layers of inner the root sheath (IRS) at anagen phase.
<b>Function</b>	enzyme regulation:Inhibited by EDTA, laminarin sulfate and, to a lower extent, by heparin and sulfamin and activated by calcium and

Nanjing BYabscience technology Co.,Ltd



magnesium.,function:Endoglycosidase which is a cell surface and extracellular matrix-degrading enzyme. Cleaves heparan sulfate proteoglycans (HSPGs) into heparan sulfate side chains and core proteoglycans. Also implicated in the extravasation of leukocytes and tumor cell lines. Due to its contribution to metastasis and angiogenesis, it is considered to be a potential target for anti-cancer therapies.,PTM:N-glycosylated. Glycosylation of the 50 kDa subunit appears to be essential for its solubility.,PTM:Proteolytically processed. The cleavage of the 65 kDa form leads to the generation of a linker peptide, 8 kDa and 50 kDa product. The active form, the 8/50 kDa heterodimer, is resistant to degradation. Complete removal of the linker peptide appears to be a pre

#### Background

Heparan sulfate proteoglycans are major components of the basement membrane and extracellular matrix. The protein encoded by this gene is an enzyme that cleaves heparan sulfate proteoglycans to permit cell movement through remodeling of the extracellular matrix. In addition, this cleavage can release bioactive molecules from the extracellular matrix. Several transcript variants encoding different isoforms have been found for this gene. [provided by RefSeq, Sep 2011],

#### matters needing attention

Avoid repeated freezing and thawing!

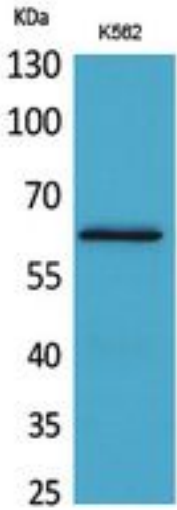
#### Usage suggestions

This product can be used in immunological reaction related experiments. For more information, please consult technical personnel.

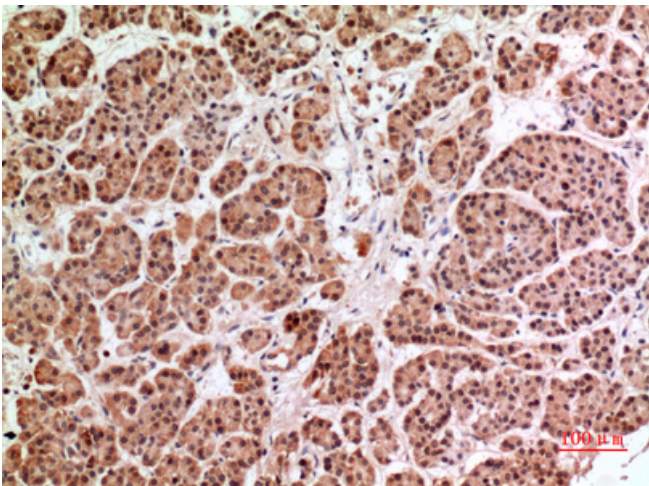
Nanjing BYabscience technology Co.,Ltd



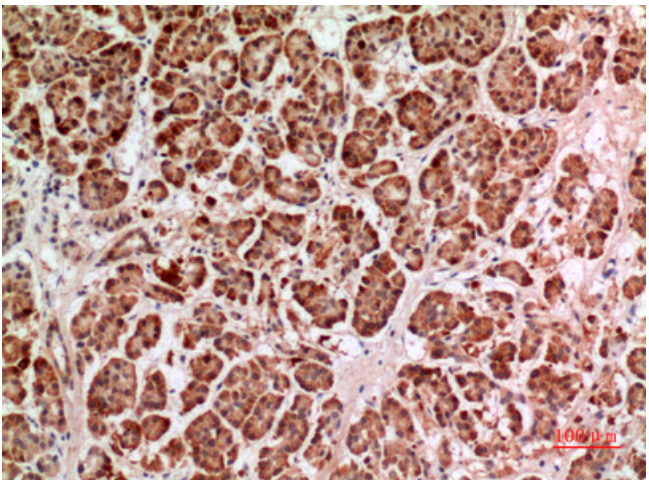
## Products Images



Western Blot analysis of K562 cells using HPA1 Polyclonal Antibody. Secondary antibody(catalog#:RS0002) was diluted at 1:20000



Immunohistochemical analysis of paraffin-embedded human-pancreas, antibody was diluted at 1:100



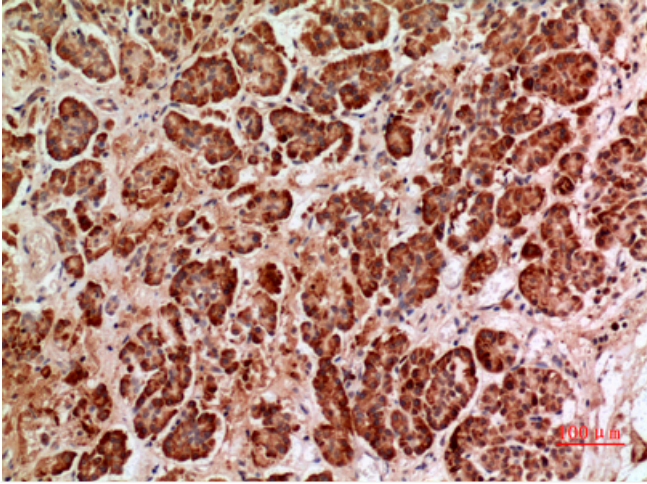
Immunohistochemical analysis of paraffin-embedded human-pancreas, antibody was diluted at 1:100

Nanjing BYabscience technology Co.,Ltd

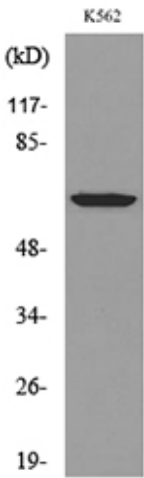
网址: [www.njbybio.com](http://www.njbybio.com)

官方热线: 025-5229-8998

监督电话: 15950492658



Immunohistochemical analysis of paraffin-embedded human-pancreas, antibody was diluted at 1:100



Western blot analysis of lysate from K562 cells, using HPSE Antibody.