



Protein C Polyclonal Antibody

Catalog No	BYab-04320
Isotype	IgG
Reactivity	Human;Rat;Mouse;
Applications	WB;IHC;IF;ELISA
Gene Name	PROC
Protein Name	Vitamin K-dependent protein C
Immunogen	The antiserum was produced against synthesized peptide derived from the Internal region of human PROC. AA range:181-230
Specificity	Protein C Polyclonal Antibody detects endogenous levels of Protein C protein.
Formulation	Liquid in PBS containing 50% glycerol, 0.5% BSA and 0.02% sodium azide.
Source	Polyclonal, Rabbit,IgG
Purification	The antibody was affinity-purified from rabbit antiserum by affinity-chromatography using epitope-specific immunogen.
Dilution	WB: 1/500 - 1/2000. IHC-p: 1:100-300 ELISA: 1/20000.. IF 1:50-200
Concentration	1 mg/ml
Purity	≥90%
Storage Stability	-20°C/1 year
Synonyms	PROC; Vitamin K-dependent protein C; Anticoagulant protein C; Autoprothrombin IIA; Blood coagulation factor XIV
Observed Band	52kD
Cell Pathway	Secreted . Golgi apparatus . Endoplasmic reticulum .
Tissue Specificity	Plasma; synthesized in the liver.
Function	catalytic activity:Degradation of blood coagulation factors Va and VIIIa.,disease:Defects in PROC are the cause of protein C deficiency autosomal dominant (ADPROCD) [MIM:176860]. ADPROCD is a cause of hereditary thrombophilia, a hemostatic disorder characterized by impaired regulation of blood coagulation and a tendency to recurrent venous thrombosis. However, many adults with heterozygous disease may be asymptomatic. Individuals with decreased amounts of protein C are classically referred to as having type I protein C deficiency and those with normal amounts of a functionally defective protein as having type II deficiency.,disease:Defects in PROC are the cause of protein C deficiency autosomal recessive (ARPROCD) [MIM:612304]. ARPROCD results in

Nanjing BYabscience technology Co.,Ltd



a thrombotic condition that can manifest as a severe neonatal disorder or as a milder disorder with late-onset thrombophilia. The severe form I

Background

This gene encodes a vitamin K-dependent plasma glycoprotein. The encoded protein is cleaved to its activated form by the thrombin-thrombomodulin complex. This activated form contains a serine protease domain and functions in degradation of the activated forms of coagulation factors V and VIII. Mutations in this gene have been associated with thrombophilia due to protein C deficiency, neonatal purpura fulminans, and recurrent venous thrombosis.[provided by RefSeq, Dec 2009],

matters needing attention

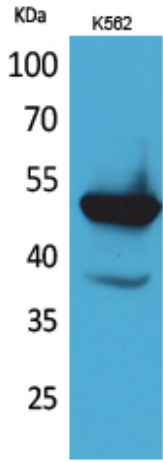
Avoid repeated freezing and thawing!

Usage suggestions

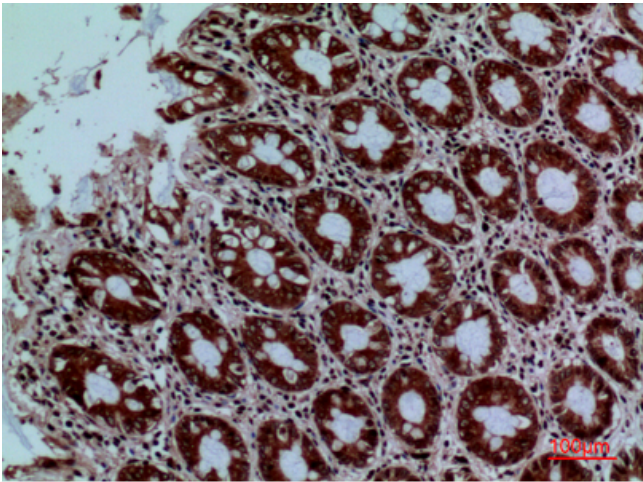
This product can be used in immunological reaction related experiments. For more information, please consult technical personnel.



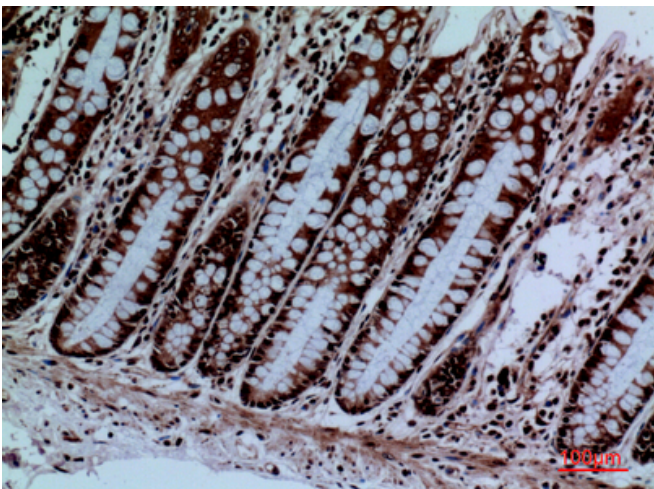
Products Images



Western Blot analysis of K562 cells using Protein C Polyclonal Antibody. Secondary antibody(catalog#:RS0002) was diluted at 1:20000

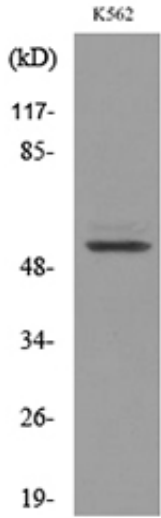


Immunohistochemical analysis of paraffin-embedded human-colon, antibody was diluted at 1:100



Immunohistochemical analysis of paraffin-embedded human-colon, antibody was diluted at 1:100

Nanjing BYabscience technology Co.,Ltd



Western blot analysis of lysate from K562 cells, using PROC Antibody.