



CRP Polyclonal Antibody

Catalog No	BYab-04313
Isotype	IgG
Reactivity	Human;Rat
Applications	WB;IHC;IF;ELISA
Gene Name	CRP
Protein Name	C-reactive protein
Immunogen	The antiserum was produced against synthesized peptide derived from the Internal region of human CRP. AA range:101-150
Specificity	CRP Polyclonal Antibody detects endogenous levels of CRP protein.
Formulation	Liquid in PBS containing 50% glycerol, 0.5% BSA and 0.02% sodium azide.
Source	Polyclonal, Rabbit,IgG
Purification	The antibody was affinity-purified from rabbit antiserum by affinity-chromatography using epitope-specific immunogen.
Dilution	WB: 1/500 - 1/2000. IHC-p: 1:100-300 ELISA: 1/20000.. IF 1:50-200
Concentration	1 mg/ml
Purity	≥90%
Storage Stability	-20°C/1 year
Synonyms	CRP; PTX1; C-reactive protein
Observed Band	25kD
Cell Pathway	Secreted.
Tissue Specificity	Found in plasma.
Function	cofactor: Binds 2 calcium ions per subunit.,function: Displays several functions associated with host defense: it promotes agglutination, bacterial capsular swelling, phagocytosis and complement fixation through its calcium-dependent binding to phosphorylcholine. Can interact with DNA and histones and may scavenge nuclear material released from damaged circulating cells.,induction: The concentration of CRP in plasma increases greatly during acute phase response to tissue injury, infection or other inflammatory stimuli. It is induced by IL-1 and IL-6.,mass spectrometry: Ref.14,miscellaneous: This protein owes its name to its ability precipitate pneumococcal C-polysaccharide in the presence of calcium.,online information: C-reactive protein entry,online information: No more Christmas pudding? - Issue 30 of January 2003,similarity: Belongs to the pentaxin

Nanjing BYabscience technology Co.,Ltd



family.,similarity:Contains 1 pentaxin dom

Background

C-reactive protein(CRP) Homo sapiens The protein encoded by this gene belongs to the pentaxin family. It is involved in several host defense related functions based on its ability to recognize foreign pathogens and damaged cells of the host and to initiate their elimination by interacting with humoral and cellular effector systems in the blood. Consequently, the level of this protein in plasma increases greatly during acute phase response to tissue injury, infection, or other inflammatory stimuli. [provided by RefSeq, Sep 2009],

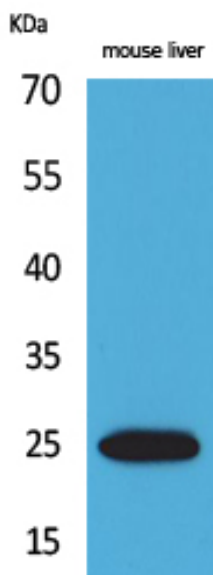
matters needing attention

Avoid repeated freezing and thawing!

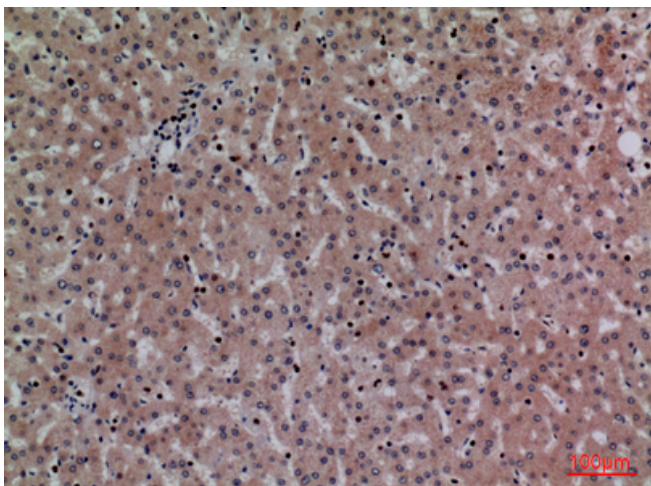
Usage suggestions

This product can be used in immunological reaction related experiments. For more information, please consult technical personnel.

Products Images

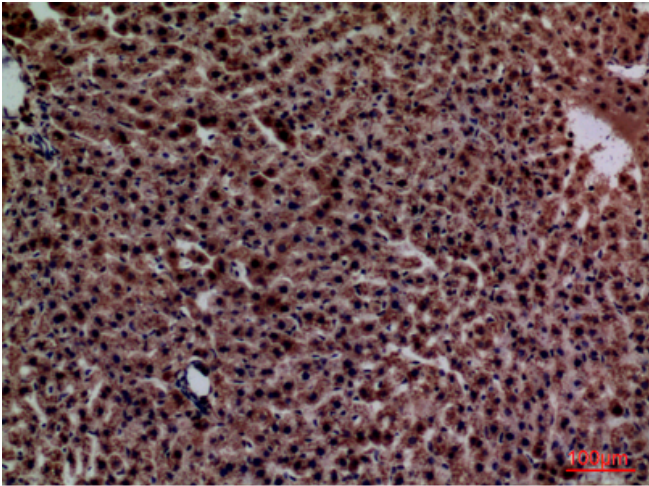


Western Blot analysis of mouse liver cells using CRP Polyclonal Antibody. Secondary antibody(catalog#:RS0002) was diluted at 1:20000

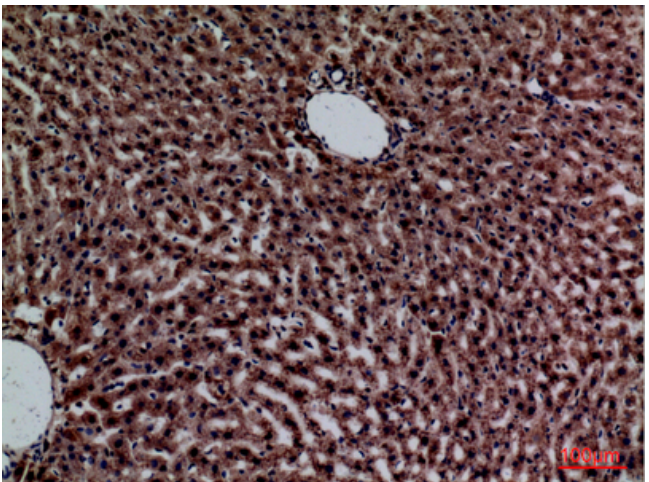


Immunohistochemical analysis of paraffin-embedded human-liver, antibody was diluted at 1:100

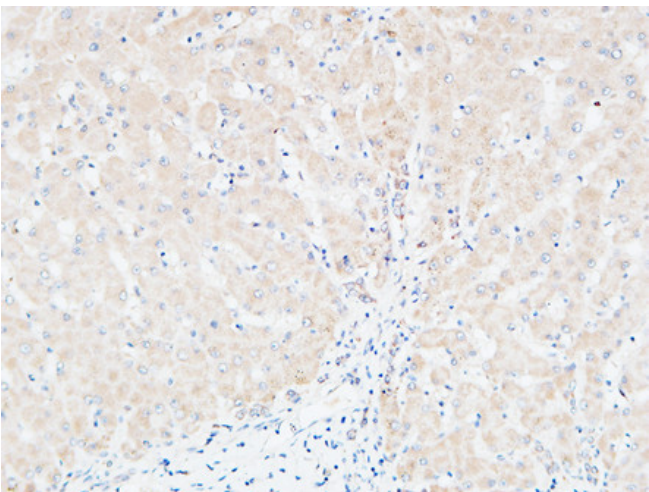
Nanjing BYabscience technology Co.,Ltd



Immunohistochemical analysis of paraffin-embedded rat-liver, antibody was diluted at 1:100



Immunohistochemical analysis of paraffin-embedded rat-liver, antibody was diluted at 1:100



Immunohistochemical analysis of paraffin-embedded Human Liver. 1, Antibody was diluted at 1:200(4° overnight). 2, High-pressure and temperature EDTA, pH8.0 was used for antigen retrieval. 3, Secondary antibody was diluted at 1:200(room temperature, 30min).