



# CPE Polyclonal Antibody

<b>Catalog No</b>	BYab-04310
<b>Isotype</b>	IgG
<b>Reactivity</b>	Human;Mouse;Rat
<b>Applications</b>	WB;IHC;IF;ELISA
<b>Gene Name</b>	CPE
<b>Protein Name</b>	Carboxypeptidase E
<b>Immunogen</b>	The antiserum was produced against synthesized peptide derived from the C-terminal region of human CPE. AA range:427-476
<b>Specificity</b>	CPE Polyclonal Antibody detects endogenous levels of CPE protein.
<b>Formulation</b>	Liquid in PBS containing 50% glycerol, 0.5% BSA and 0.02% sodium azide.
<b>Source</b>	Polyclonal, Rabbit,IgG
<b>Purification</b>	The antibody was affinity-purified from rabbit antiserum by affinity-chromatography using epitope-specific immunogen.
<b>Dilution</b>	WB: 1/500 - 1/2000. IHC-p: 1:100-300 ELISA: 1/20000.. IF 1:50-200
<b>Concentration</b>	1 mg/ml
<b>Purity</b>	≥90%
<b>Storage Stability</b>	-20°C/1 year
<b>Synonyms</b>	CPE; Carboxypeptidase E; CPE; Carboxypeptidase H; CPH; Enkephalin convertase; Prohormone-processing carboxypeptidase
<b>Observed Band</b>	53kD
<b>Cell Pathway</b>	[Isoform 1]: Cytoplasmic vesicle, secretory vesicle . Cytoplasmic vesicle, secretory vesicle membrane ; Peripheral membrane protein . Secreted . Associated with the secretory granule membrane through direct binding to lipid rafts in intragranular conditions. .
<b>Tissue Specificity</b>	Brain,Colon,Eye,
<b>Function</b>	catalytic activity:Release of C-terminal arginine or lysine residues from polypeptides.,cofactor:Binds 1 zinc ion per subunit.,function:Removes residual C-terminal Arg or Lys remaining after initial endoprotease cleavage during prohormone processing. Processes proinsulin.,similarity:Belongs to the peptidase M14 family.,subcellular location:Secretory granules of pancreatic islets, adrenal gland, pituitary and brain.,

Nanjing BYabscience technology Co.,Ltd



### Background

carboxypeptidase E(CPE) Homo sapiens This gene encodes a member of the M14 family of metalloproteases. The encoded preproprotein is proteolytically processed to generate the mature peptidase. This peripheral membrane protein cleaves C-terminal amino acid residues and is involved in the biosynthesis of peptide hormones and neurotransmitters, including insulin. This protein may also function independently of its peptidase activity, as a neurotrophic factor that promotes neuronal survival, and as a sorting receptor that binds to regulated secretory pathway proteins, including prohormones. Mutations in this gene are implicated in type 2 diabetes. [provided by RefSeq, Nov 2015],

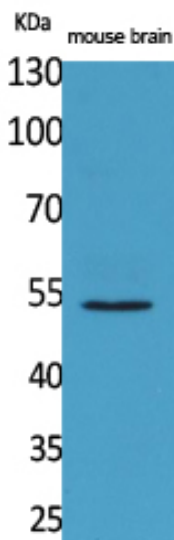
### matters needing attention

Avoid repeated freezing and thawing!

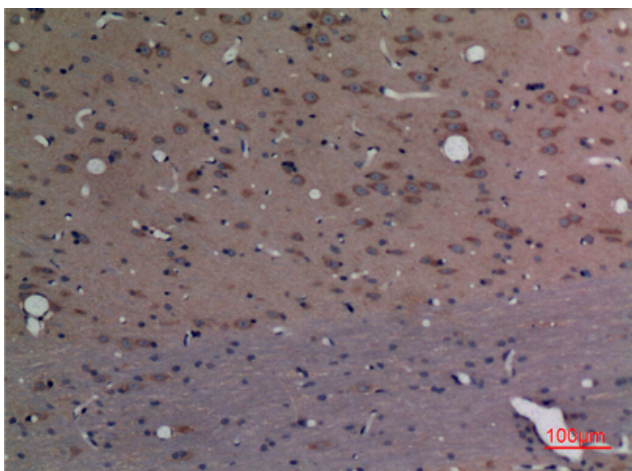
### Usage suggestions

This product can be used in immunological reaction related experiments. For more information, please consult technical personnel.

## Products Images

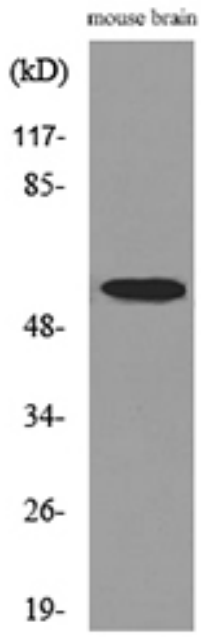


Western Blot analysis of mouse brain cells using CPE Polyclonal Antibody. Secondary antibody(catalog#:RS0002) was diluted at 1:20000



Immunohistochemical analysis of paraffin-embedded rat-brain, antibody was diluted at 1:100

Nanjing BYabscience technology Co.,Ltd



Western blot analysis of lysate from mouse brain cells,  
using CPE Antibody.